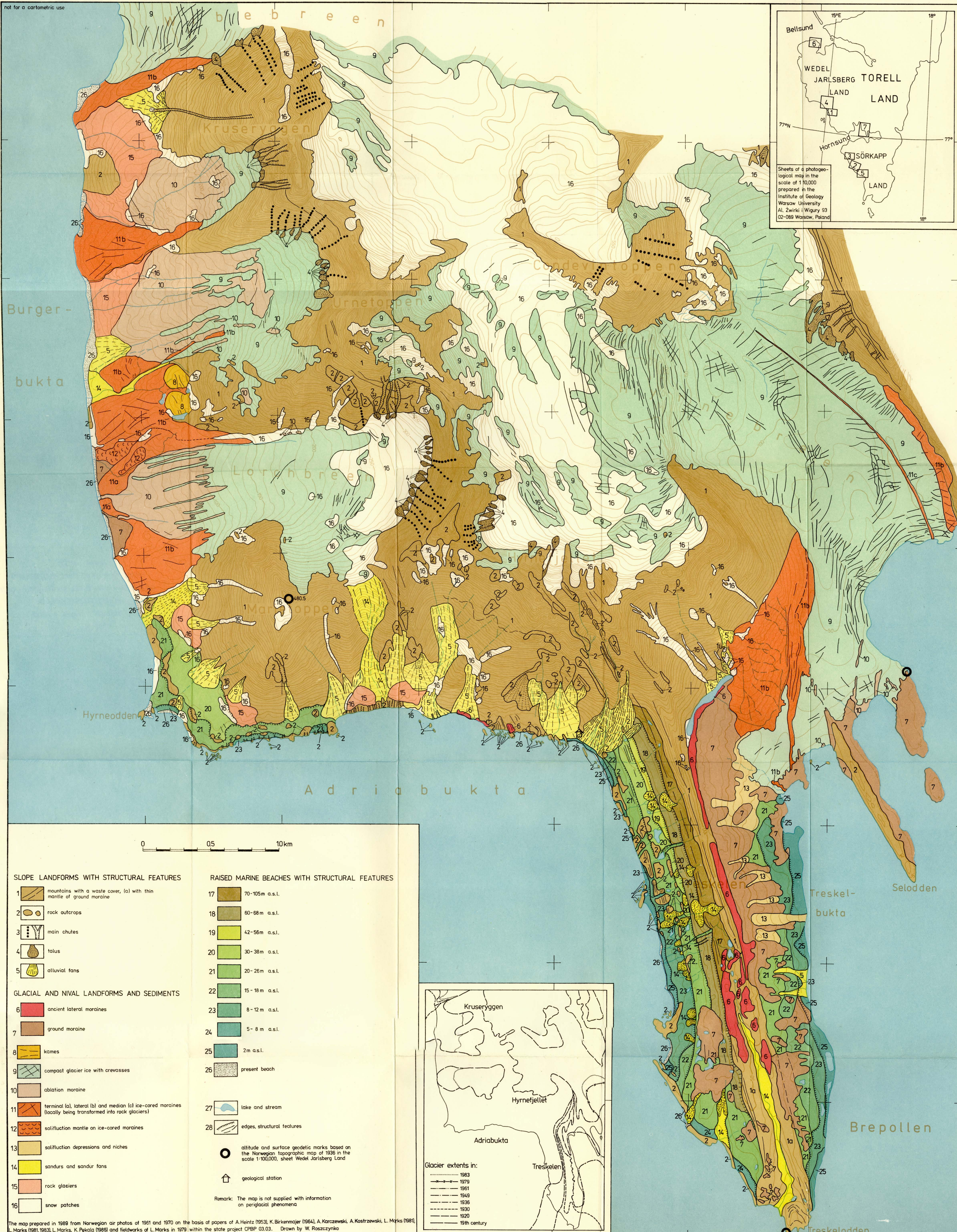
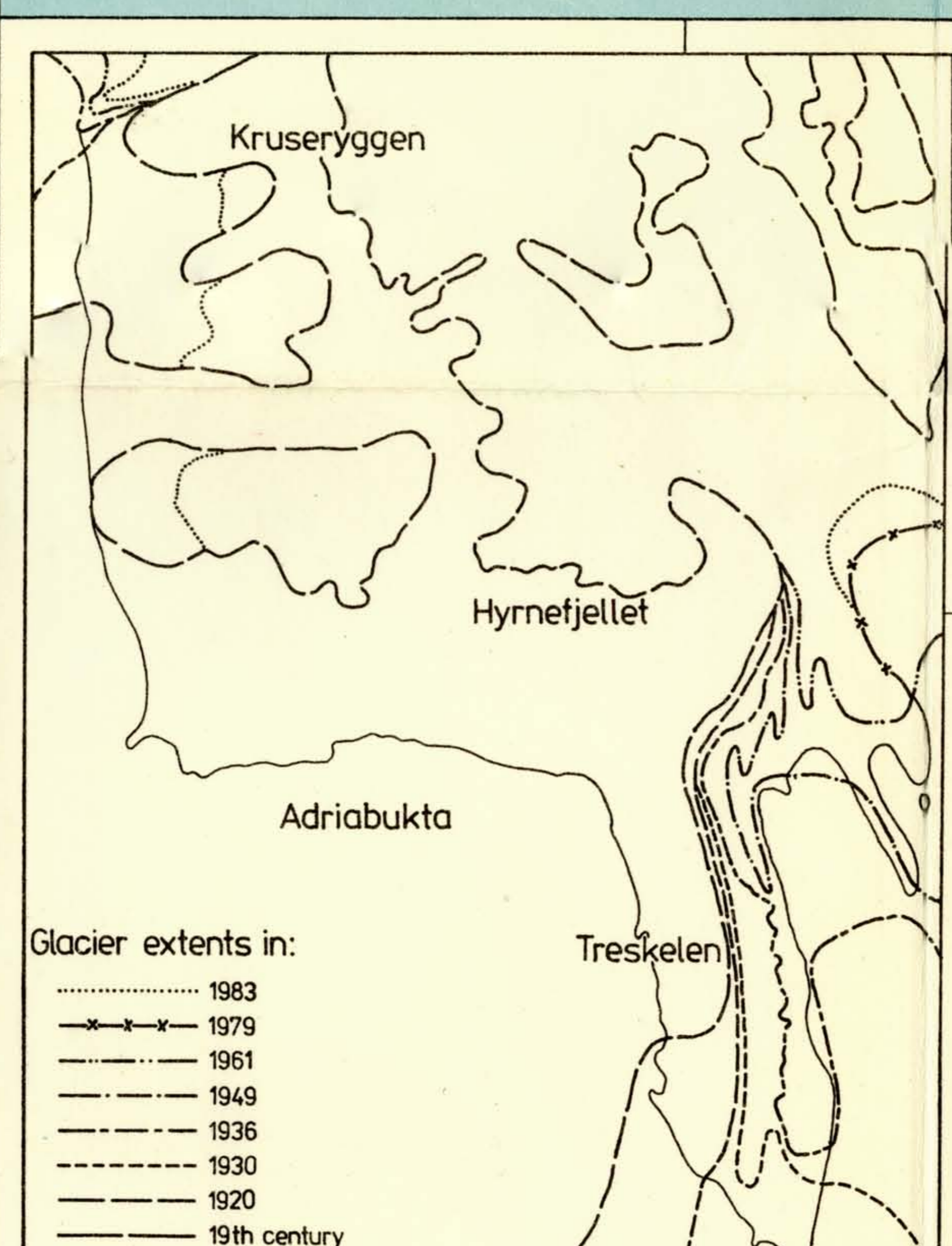


PHOTOGEOLOGICAL MAP OF TRESKELEN-HYRNEFJELLET - KRUSERYGGEN AREA (WEDEL JARLSBERG LAND, SPITSBERGEN)

Scale 1:10,000



- SLOPE LANDFORMS WITH STRUCTURAL FEATURES**
- 1 mountains with a waste cover, (a) with thin mantle of ground moraine
 - 2 rock outcrops
 - 3 main chutes
 - 4 talus
 - 5 alluvial fans
- GLACIAL AND NIVAL LANDFORMS AND SEDIMENTS**
- 6 ancient lateral moraines
 - 7 ground moraine
 - 8 kames
 - 9 compact glacier ice with crevasses
 - 10 ablation moraine
 - 11 terminal (a), lateral (b) and median (c) ice-cored moraines (locally being transformed into rock glaciers)
 - 12 solifluction mantle on ice-cored moraines
 - 13 solifluction depressions and niches
 - 14 sandurs and sandur fans
 - 15 rock glaciers
 - 16 snow patches
- RAISED MARINE BEACHES WITH STRUCTURAL FEATURES**
- 17 70-105m a.s.l.
 - 18 60-68m a.s.l.
 - 19 42-56m a.s.l.
 - 20 30-38m a.s.l.
 - 21 20-26m a.s.l.
 - 22 15-18m a.s.l.
 - 23 8-12m a.s.l.
 - 24 5-8m a.s.l.
 - 25 2m a.s.l.
 - 26 present beach
 - 27 lake and stream
 - 28 edges, structural features
- altitude and surface geodetic marks based on the Norwegian topographic map of 1936 in the scale 1:100,000, sheet Wedel Jarlsberg Land
- ↑ geological station
- Remark: The map is not supplied with information on periglacial phenomena



The map prepared in 1989 from Norwegian air photos of 1961 and 1970 on the basis of papers of A. Heintz (1953), K. Birkenmajer (1964), A. Karczewski, A. Kostrzewski, L. Marks (1981), L. Marks (1981, 1983), L. Marks, K. Pykala (1988) and fieldworks of L. Marks in 1979 within the state project CPBP 03.03. Drawn by W. Roszczyzko

Opracowanie graficzne i druk Wydawnictwa Geologiczne, Zielonka 1473/88 X-80790. Egr. 700. 1989 r.