







## The effect of meteorological conditions on the course of development stages and yield of winter wheat in southern Poland

Barbara Skowera\*<sup>1)</sup> , Bogdan Kulig<sup>2)</sup> , Agnieszka Ziarnicka-Wojtaszek<sup>1)</sup> ,  
Wiesław Grygierzec<sup>3)</sup> , Elżbieta Ziółkowska<sup>4)</sup> , Andrzej Lepiarczyk<sup>2)</sup> 

<sup>1)</sup> University of Agriculture in Krakow, Faculty of Environmental Engineering and Land Surveying, Department of Ecology, Climatology and Air Protection, Mickiewicza Ave, 24/28, 30-059 Krakow, Poland

<sup>2)</sup> University of Agriculture in Krakow, Faculty of Agriculture and Economics, Department of Agriculture and Plant Production, Mickiewicza Ave, 21, 31-120 Krakow, Poland

<sup>3)</sup> University of Agriculture in Krakow, Faculty of Agriculture and Economics, Department of Statistics and Social Policy, Mickiewicza Ave, 21, 31-120 Krakow, Poland

<sup>4)</sup> Jagiellonian University in Krakow, Institute of Environmental Sciences, Gronostajowa St, 7, 30-387 Krakow, Poland

\* Corresponding author

RECEIVED 21.07.2023

ACCEPTED 27.11.2023

AVAILABLE ONLINE 29.03.2024

**Abstract:** Yield and the course of crop vegetation are the result of the interaction between the level of cultivation technology and the course of meteorological conditions, which are a variable production factor. The aim of the study was to quantify the effect of meteorological conditions on the course of development stages and yield of winter wheat cultivated in two technological variants (A1 – medium-intensive and A2 – intensive). The paper uses data on yield and timing of winter wheat development stages from four Experimental Stations for Variety Testing (Pol. Centralny Ośrodek Badania Odmian Roślin Uprawnych – COBORU) experimental stations from 2007–2016 located within the Upper Vistula and Upper Oder River basins. To determine the dependence of the length of development stages of winter wheat on the values of selected meteorological elements, the linear regression method, correlation coefficient. It was found that the lengths of the selected developmental stages are positively correlated with air temperature and negatively correlated with the sum and number of days with precipitation in these stages. A 1°C increase in air temperature resulted in a shortening of the shooting – heading and heading – full maturity periods by 2.5 and 2.8 days respectively. An increase of 100 mm of precipitation in the periods sowing – full maturity and heading – full maturity resulted in an increase of these periods by 5 and 10 days. Increasing the number of days with precipitation by 10 days in the sowing – full maturity and heading – vax maturity stages resulted in extending these stages by 4.1 to 4.4 and 7 to 7.5 days for the A1 and A2 cropping technologies, respectively.

**Keywords:** crops, length of phenophases, number of days with precipitation, precipitation, temperature, wheat

### INTRODUCTION

There is growing evidence of negative impacts of observed climate change on crop yields, crop quality and food security prospects at a global scale (e.g., Newton, Johnson and Gregory, (2011), Challinor *et al.* (2014), Ray *et al.* (2019)]. A study by Wing, Cian

De and Mistry (2021), which examined the risk to global crop yields from climate warming with projections constructed using an ensemble of 21 climate model simulations, suggests that under strong warming, climate change could reduce global crop yields by 3 to 12% by mid-century and by 11 to 25% by the end of the century. Variability in weather elements determines conditions

for plant growth and development, triggering genotype-environment interactions in plants (Kołodziej and Kulig, 2007; Weber *et al.*, 2011; Jadczyzyn and Bartosiewicz, 2020). The course and length of phenophases and crop yields are influenced by rainfall and temperature variability, as well as by photoperiodism, i.e. the response of plants to the length of the day (long-day or photoperiodically indifferent varieties) (Dubcovsky *et al.*, 2006).

Poland is located in the zone of temperate transitional climate, which is characterised by high variability of meteorological conditions (temperature and precipitation) (Wójcik and Miętus, 2014; Ziarnicka-Wojtaszek, 2020). In recent decades, there has been an increase in the number of days with low precipitation and a decrease in the number of days with higher precipitation (>10 mm) and stable annual precipitation totals with an increasing temperature trend (Skowera, Kopcińska and Bokwa, 2016; Ziarnicka-Wojtaszek and Kopcińska, 2020). The climate changes observed in Poland in recent decades are manifested by an increase in the average annual temperature of about 0.3°C per 10 years, against the background of a global temperature increase at a rate of 0.2°C per 10 years (IPCC, 2007). The effect of these changes is the observed and projected changes in sowing and harvesting dates, as well as crop yields (Kołodziej and Kulig, 2007; Weber *et al.*, 2011, Jadczyzyn and Bartosiewicz, 2020).

Yield and the course of crop vegetation are the result of the interaction between the level of cultivation technology and the course of meteorological conditions, which are variable production factors (Kołodziejczyk, Szmigił and Kulig, 2009). Common wheat is one of the most important crops. Its global area is about 215.9 mln ha (Global..., 2021/2022; FAO STAT, no date). In Poland, more than approximately 2 mln ha of winter wheat are grown (GUS, 2022). Fluctuations in winter wheat yields are most often caused by variability in meteorological conditions, especially the amount and frequency of precipitation during the growing season, and to a lesser extent by extreme temperatures. Among the meteorological elements, precipitation is subject to the greatest fluctuations and shows positive correlations with the length of developmental stages of winter wheat in the period from the beginning of vegetation to flowering (Galant and Andrzejczak, 2004). The main period of water demand for winter wheat is during the shooting and earing stages and slightly less during grain formation and filling. In Poland, these periods are between the end of April and middle of July (Podolska, 2018). The first, direct source of water for plants in field conditions is their resources in the soil; the second, indirect source is precipitation. For 1 tonne of grain with an adequate amount of straw, wheat uses about 30 mm of water. During the winter dormancy period, the optimum rainfall is 10 mm per decade. After the resumption of vegetation, the water requirement varies from 195–230 mm of precipitation depending on the soil type (Kaczmarczyk and Nowak, 2006). An important and variable element of the environment is climate which determines the course and length of phenophases and plant yield. Ye *et al.* (2020), Xiao and Tao (2014) showed a shift in the timing of the occurrence and duration of phenophases of winter wheat in response to increasing temperatures, which is most often manifested by a shortening of the flowering and maturation period of this species. However, the length of the entire vegetation cycle is rather stabilised. Yue, Zhang and Shang (2019) showed that a 1°C increase in temperature during the growing season results in a 3–10%

reduction in yield. An increase in temperature with low precipitation results in a shortening of the developmental phases of plants especially at the generative stage; from stem elongation/shooting to stem maturity (Kanapickas *et al.*, 2022).

The research hypothesis is that not only contemporary climate change, but also the level of intensity of cultivation technology influences the yield and the timing of developmental stages in cereals. Therefore, the aim of the study was to quantify the effect of meteorological conditions on the timing and length of development phases and yield of winter wheat grown in two technological variants (A1 – medium-intensive and A2 – intensive) in the Upper Vistula and Upper Oder River basins (southern Poland) in the period 2007–2016.

## STUDY MATERIALS AND METHODS

In this study, we used data on yield and timing of developmental stages of winter wheat (*Triticum aestivum ssp. vulgare*) from the period 2007–2016 from four Experimental Stations for Variety Testing (Pol. Centralny Ośrodek Badania Odmian Roslin Uprawnych – COBORU): Słupia Jędrzejowska, Węgrzce, Pawłowice and Przeclaw. These stations were selected for their location within the Upper Vistula and Upper Oder River basins and for their altitude below 300 m a.s.l. (Fig. 1).

These stations were selected for their location in the Upper Vistula and Upper Oder River basins and for their altitude below 300 m a.s.l. Elevation data come from the European Digital Elevation Model (EU-DEM), which is part of the European Union's Copernicus Land Monitoring Service. Data on voivodship boundaries and river basins have been downloaded according to the "Public data opening programme" of the Polish Ministry of Digital Affairs (Pol. Ministerstwo Cyfryzacji).

According to the climatic norm 1991–2020, provided by the Institute of Meteorology and Water Management – PIB (Pol. Instytut Meteorologii i Gospodarki Wodnej – IMGW-PIB), the annual air temperature in the area was in the range of 8 to 9°C, in winter 0 to –2°C, in summer the average temperature was 18–19°C. Precipitation was relatively high here compared to the Central Polish Lowlands. Annual precipitation averaged 600–700 mm, in autumn about 160 mm, in winter about 100 mm, while from the beginning of the meteorological growing season until the end of July, i.e. reaching full maturity of the wheat, average precipitation amounts to 320–360 mm.

The research was conducted for two winter wheat cultivation variants; medium-intensive A1 and intensive A2. The A2 level was characterised by 40 kg higher nitrogen fertilisation compared to A1 (100–120 at A1 and 140–160 kg N·ha<sup>-1</sup> at A2). Phosphorus and potassium fertilisation was the same at 60 and 90 kg P<sub>2</sub>O<sub>5</sub> and K<sub>2</sub>O, herbicides and insecticides were used at A1 sites and herbicides, insecticides and fungicides were used at A2 sites. The sowing date at the stations in question fell within the optimal date for these locations, i.e. between September 23 and October 8, while harvesting took place between July 20 and August 10. The occurrence of the other periods is presented in the results chapter.

Based on the data collected, the length of the main interphases of winter wheat was determined. These were the following periods: sowing – emergence, emergence – tillering A1, A2, stem shooting – heading A1, A2; heading – wax maturity A1,



but differed significantly in subsequent years (Fig. 2b, d, f). In the shooting – heading period, the highest air temperature occurred in Słupia Jędrzejowska (13.7°C) and the lowest in Węgrzce (12.6°C), while the highest temperature in this period occurred in 2012 (15.3°C) and the lowest in 2016 (11.9°C) (Tab. 1, Fig. 2a, b). For precipitation totals, the highest totals and number of days with precipitation occurred in Węgrzce (612 mm and 121 days) and the lowest in Pawłowice (567 mm and 115 days), while the highest precipitation totals and number of days with precipitation were observed in 2011 and the lowest in 2015. Detailed data for the development stages are presented in (Tab. 1, Fig. 2c–f).

The duration of one of the main development phases (heading – full maturity) is shown in Figure 3a; it ranged from 58 days in variants A1 and A2 in Przeclaw to 67 days in variant A1 in Pawłowice. No significant differences in the duration of this period were found in the study area (Fig. 3a). On the other hand, in successive seasons of the study period (2007–2016), the duration of this interphase differed significantly, being the shortest in 2016; it was 52 days, while the longest in 2011; it was 72 and 73 days in technology variants A1 and A2, respectively (Fig. 3b), which was confirmed by the results of the non-parametric Kruskal–Wallis test.

The results of the Kruskal–Wallis test, regression analysis and Wright’s path analysis in the Upper Vistula and Upper Oder River basins during the decade under study showed significant, year-to-year variation in the influence of weather elements on the course of development periods (Tab. 2, 3 and Figs. 2a–f, 3) and winter wheat yield (Tab. 4, and Fig. 4a, b).

In the regression analysis presented here, the dependent variable was the length of development stages and the independent variables were mean air temperature, total precipitation and number of days with precipitation in the respective period. The highest, statistically significant correlation coeffi-

cients were obtained for the stages: sowing – full maturity, stem shooting – heading, heading – wax maturity and heading – full maturity (Tab. 2). Table 2 shows the linear regression equations for the significant relationships.

On the basis of the obtained relationships, it was found that the average air temperature significantly affected the duration of the interphases of stem shooting – wax maturity. On the basis of the correlations obtained, it was found that an increase of 1°C in air temperature resulted in a shortening of the stages of stem shooting – heading – full maturity from –2.54 to –2.84 days on average. Slightly stronger relationships were obtained for the A1, i.e. medium-intensive technological variant ( $r = -0.551$  and  $-0.493$ ) respectively (Tab. 2). Similar results were obtained by Dížková *et al.* (2022) in the Czech Republic. They showed earlier occurrence of development phases of winter wheat and correlation with air temperature. In the case of the dependence of the length of development stages on the sum of precipitation and the number of days with precipitation in these periods, these parameters result in longer interphases. Similar results were obtained by Kanapickas *et al.* (2022) in Lithuania. They found that there was a shortening of the developmental phases of stem shooting and earing and a negative correlation between the length of the stage of stem shooting and grain formation with mean May temperature, and a positive correlation from stem shooting to grain formation.

A stronger correlation with rainfall compared to temperature was observed for both interphase length (from  $r = +0.552$  to  $r = +0.771$ ) and number of days with precipitation (from  $r = +0.387$  to  $r = +0.813$ ). According to the study, precipitation amount had a greater effect on developmental stage duration, with an average extension of 0.5 to 1.0 days per 10 mm and 4.1 to 7.5 per 10 days with precipitation. Significant correlations occurred in the stages: stem shooting – heading A1, heading – full maturity A1 and A2, and sowing – full maturity A1 and A2.

**Table 1.** Average values of air temperature ( $T$ , °C), total precipitation ( $P$ , mm) and number of days with precipitation ( $Ndp$ , day) and length of development stages ( $LDS$ ) of winter wheat grown at Experimental Stations for Variety Testing (2007–2016)

Development stage	Experimental Stations for Variety Testing															
	Pawłowice				Węgrzce				Słupia Jędrzejowska				Przeclaw			
	$T$	$P$	$Ndp$	$LDS$	$T$	$P$	$Ndp$	$LDS$	$T$	$P$	$Ndp$	$LDS$	$T$	$P$	$Ndp$	$LDS$
Sowing <sup>1)</sup>	–	–	–	275	–	–	–	277	–	–	–	271	–	–	–	274
Sowing – emergence	11.5	18	4	15	11.2	27	4	13	12.4	23	5	16	11.5	30	5	16
Emergence – tillering	11.5	78	12	39	6.2	95	20	47	4.8	59	12	46	8.5	83	18	40
Stem shooting – heading A1	13.0	91	15	37	12.6	102	15	32	13.7	86	13	31	13.5	96	16	34
Stem shooting – heading A2	13.2	101	17	40	12.7	106	16	33	13.8	87	14	32	13.7	97	16	35
Heading – wax maturity A1	18.5	129	19	45	17.9	146	25	49	18.3	124	22	44	18.8	128	22	44
Heading – wax maturity A2	18.6	130	18	44	18.0	143	26	49	18.4	125	23	45	18.9	135	23	45
Heading – full maturity A1	19.0	194	33	67	18.2	201	34	66	18.7	174	30	61	19.0	186	30	59
Heading – full maturity A2	19.2	187	32	65	18.3	196	34	65	18.7	174	30	61	19.1	190	31	59
Sowing – full maturity A1	8.4	567	115	304	7.9	612	121	300	8.1	570	115	305	8.1	573	116	298
Sowing – full maturity A2	8.5	567	115	304	7.9	612	121	300	8.1	572	116	306	8.2	578	117	298

<sup>1)</sup> Day of the year.

Explanations: A1 = medium-intensive, A2 = intensive.

Source: own study.

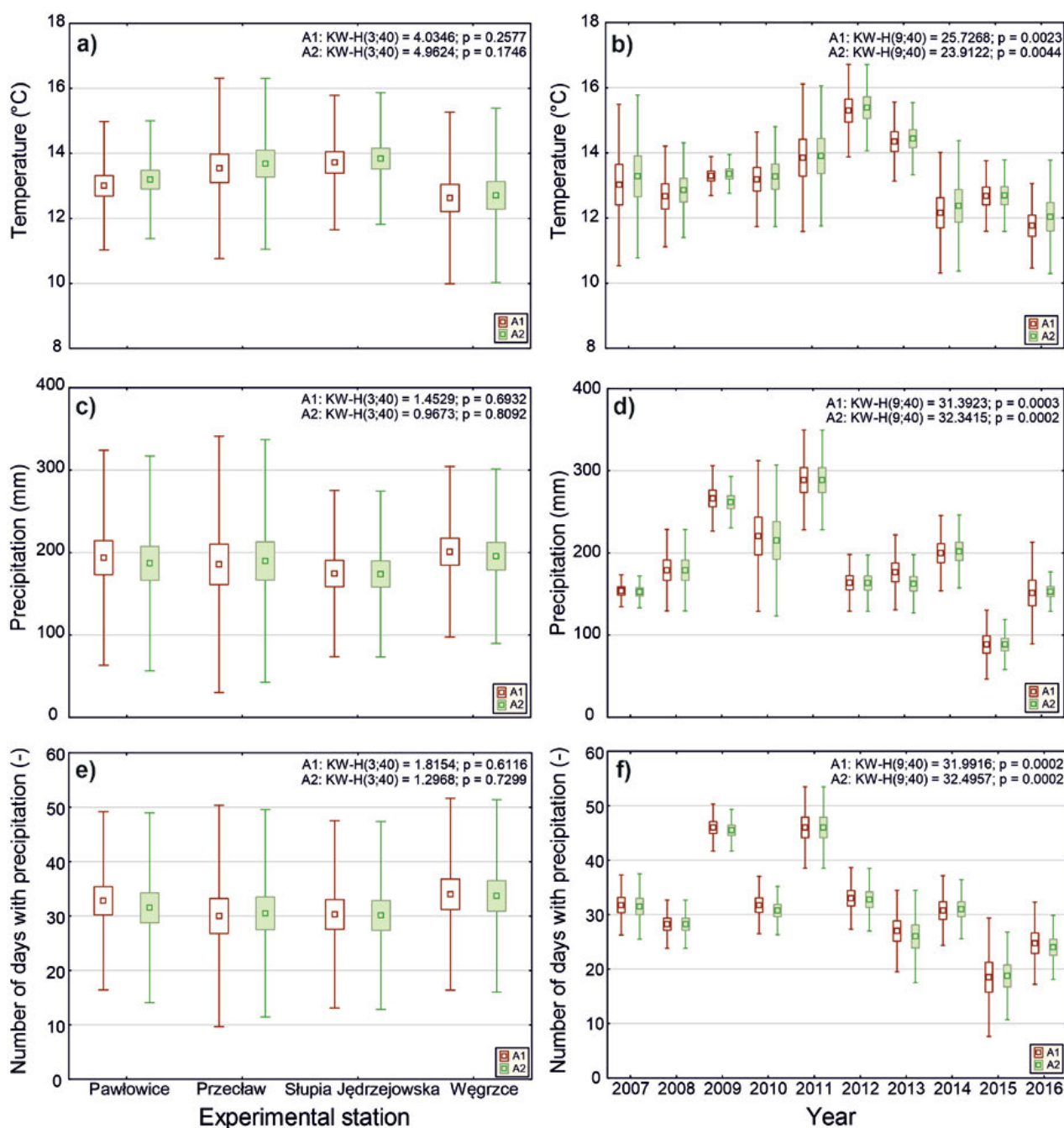
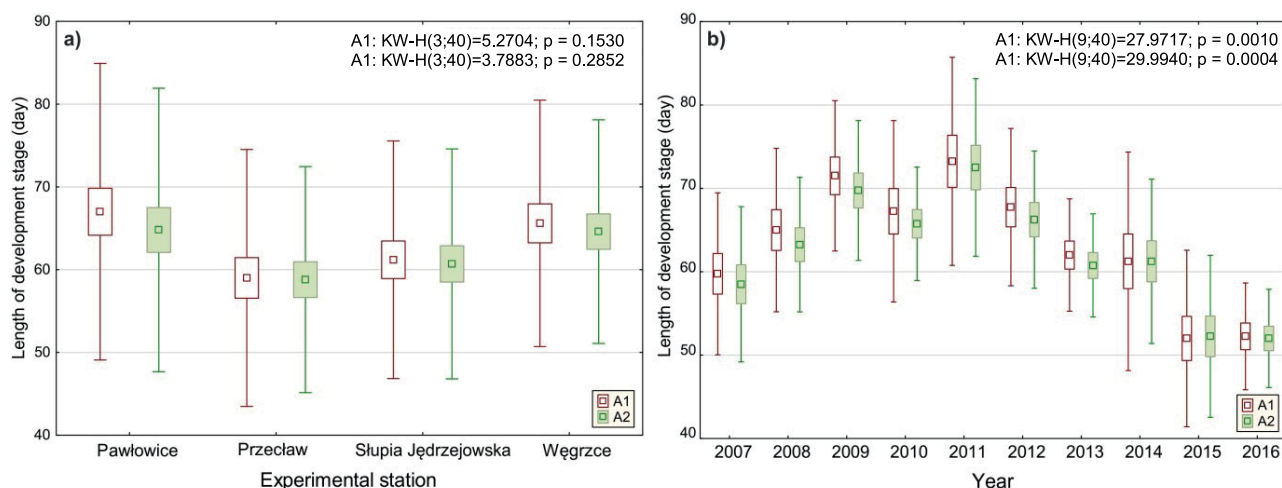


Fig. 2. Mean values of temperature ( $T$ ), total precipitation ( $P$ ) and number of days with precipitation ( $Ndp$ ) at the one of main developmental stages of winter wheat (stage of heading – full maturity) in two technological variants (A1 = medium-intensive and A2 = intensive): a), c), e) at the experimental stations; b), d), f) in 2007–2016; KW-H = Kruskal–Wallis test,  $p$  = probability ( $p > 0.05$  not statistically significant,  $p \leq 0.05$  statistical significance); source: own study

A significant relationship with the number of days with precipitation in the case of stem shooting – flowering stage A1 and A2 (Tab. 2) was also found. The strongest effect of the precipitation and the number of days with precipitation on the length of the developmental stage of heading – full maturity A1 ( $r$ : +0.764, +0.805) and A2 ( $r$ : +0.771, +0.813) was observed, with a stronger effect found at the intensive level (A2) (Tab. 2). According to the results of the simple regression analysis, the shooting-heading interphase length showed the strongest correlation with temperature ( $T$ ), with correlations of  $-0.551$  (A1) and  $-0.538$  (A2). While the length of the head-to-full maturity interphase showed a correlation with both the total amount of rainfall ( $P$ ) and

the number of days with precipitation ( $Ndp$ );  $P$ : +0.764, +0.771,  $Ndp$ : +0.805, +0.813 respectively for A1 and A2 level (Tab. 2).

Based on the regression analysis, it was found that an increase of 10 mm in precipitation in the stages of earing – wax maturity, earing – full maturity and sowing – full maturity caused these periods to be prolonged by 0.5 and 1.0 days (for the latter), respectively. An increase of 10 days in the number of precipitation in these periods resulted in an increase of 2.6 to 2.8) and 7 to 7.5 days for A1 and A2 cropping technologies, respectively (Tab. 2). In our study, it was observed that all the studied traits, i.e. lengths of development stages and yields in the two technology variants (A1, A2) differed statistically significantly



**Fig. 3.** Mean length of the development stage (*LDS*) of heading–full maturity of winter wheat in the Upper Vistula and Upper Oder River basins in two technological variants (A1, A2): a) in the experimental stations, b) in 2007–2016; A1, A2, KW-H, *p* as in Fig. 2; source: own study

**Table 2.** Dependence of length of development stages (*Y*) of winter wheat grown in two technological variants (A1, A2) on the values of selected weather elements

Development stage	Regression equation	<i>r</i>	<i>F</i> (1.38)	<i>p</i> <	Range of significance
Dependence of the length of the development stages ( <i>Y</i> ) of winter wheat on air temperature ( <i>T</i> )					<i>T</i> (°C)
Stem shooting – heading A1	$Y = -2.700T + 69.246$	-0.551	16.588	0.00023	10.9–16.3
Stem shooting – heading A2	$Y = -2.838T + 72.880$	-0.538	15.441	0.00035	11.0–16.3
Heading – vax maturity A1	$Y = -2.542T + 92.057$	-0.493	12.188	0.00124	16.2–20.2
Heading – vax maturity A2	$Y = -2.742T + 96.223$	-0.474	10.988	0.00202	16.5–20.2
Heading – full maturity A1, A2	no statistically significant relationship				
Sowing – full maturity A1, A2	no statistically significant relationship				
Dependence of the length of the development stages ( <i>Y</i> ) of winter wheat on the total precipitation ( <i>P</i> )					<i>P</i> (mm)
Stem shooting – heading A1, A2	no statistically significant relationship				
Heading – vax maturity A1	$Y = 0.082P + 34.580$	0.716	39.963	0.00000	45–226
Heading – vax maturity A2	$Y = 0.088P + 33.890$	0.762	52.731	0.00000	45–243
Heading – full maturity A1	$Y = 0.104P + 43.630$	0.764	53.164	0.00000	71–316
Heading – full maturity A2	$Y = 0.097P + 44.049$	0.771	55.956	0.00000	71–316
Sowing – full maturity A1	$Y = 0.050P + 272.792$	0.568	18.056	0.00013	402–901
Sowing – full maturity A2	$Y = 0.046P + 275.194$	0.552	16.699	0.00022	402–901
Dependence of the length of the development stages ( <i>Y</i> ) of winter wheat on the number of days with precipitation ( <i>Ndp</i> )					<i>Ndp</i> (day)
Stem shooting – heading A1	$Y = 0.434Ndp + 27.101$	0.460	10.173	0.00285	8–32
Stem shooting – heading A2	$Y = 0.449Ndp + 27.971$	0.479	11.328	0.00176	8–32
Heading – vax maturity A1	$Y = 0.258Ndp + 39.660$	0.387	6.728	0.01340	0–41
Heading – vax maturity A2	$Y = 0.284Ndp + 39.284$	0.419	8.115	0.00705	0–41
Heading – full maturity A1	$Y = 0.754Ndp + 39.236$	0.805	70.101	0.00000	11–50
Heading – full maturity A2	$Y = 0.699Ndp + 40.248$	0.813	73.909	0.00000	13–50
Sowing – full maturity A1	$Y = 0.440Ndp + 250.362$	0.690	34.534	0.00000	80–151
Sowing – full maturity A2	$Y = 0.411Ndp + 253.990$	0.669	30.743	0.00000	82–151

Explanations: *r* = correlation coefficient, *F* = Fisher’s statistic, *p* = probability, *Y* = length of the development stages, *T* = average air temperature at a given stage, *P* = total precipitation at a given development stage, *Ndp* = number of days with precipitation >0.1 mm at a given stage, A1, A2 as in Tab. 2.

Source: own study.

**Table 3.** Interrelation of the length of selected development stages of winter wheat (*LDS*) with meteorological parameters (*T*, *P*, *Ndp*)

Parameter	Medium-intensive variant A1				Intensive variant A2			
	total	<i>T</i>	<i>P</i>	<i>Ndp</i>	total	<i>T</i>	<i>P</i>	<i>Ndp</i>
<b>Shooting – heading stage</b>								
<i>T</i>	-0.56	-0.36	0.14	-0.34	-0.54	-0.32	0.20	-0.42
<i>P</i>	0.24	0.06	-0.91	1.00	0.24	0.06	-1.08	1.26
<i>Ndp</i>	0.46	0.10	-0.84	1.20	0.48	0.10	-0.99	1.37
<b>Heading – wax maturity stage</b>								
<i>T</i>	-0.49	-0.20	-0.40	0.11	-0.48	-0.10	-0.41	0.03
<i>P</i>	0.72	0.10	0.80	-0.18	0.76	0.05	0.75	-0.04
<i>Ndp</i>	0.39	0.08	0.56	-0.25	0.42	0.04	0.45	-0.07

Explanations: *T*, *P*, *Ndp* as in Tab. 2.

Source: own study.

**Table 4.** Dependence of the yield of winter wheat (*Y*) grown in two technological variants (A1, A2) on the values of selected weather elements

Development stage	Regression equation	<i>r</i>	<i>F</i> (1.38)	<i>p</i> <	Range of significance
Dependence of winter wheat yield ( <i>Y</i> ) to air temperature ( <i>T</i> )					no statistically significant relationship
Dependence of the yield of winter wheat ( <i>Y</i> ) on total precipitation ( <i>P</i> )					<i>P</i> (mm)
Shooting – heading A1	$Y = -0.007P + 8.856$	-0.330	4.636	0.0377	30–313
Shooting – heading A2	no statistically significant relationship				
Heading – wax maturity A1, A2					
Heading – full maturity A1, A2					
Sowing – full maturity A1	$Y = -0.005P + 11.035$	-0.446	9.422	0.00394	402–901
Sowing – full maturity A2	$Y = -0.005P + 12.064$	-0.435	8.867	0.00503	402–901
Dependence of the yield of winter wheat ( <i>Y</i> ) on number of days with precipitation ( <i>Ndp</i> )					<i>Ndp</i> (day)
Sowing – heading A1	$Y = -0.064Ndp + 9.184$	-0.316	4.208	0.04717	8–32
Shooting – heading A2	no statistically significant relationship				
Heading – wax maturity A1, A2					
Heading – full maturity A1, A2					
Sowing – full maturity A1	$Y = -0.028Ndp + 11.477$	-0.353	5.412	0.02543	80–151
Sowing – full maturity A2	$Y = -0.028Ndp + 12.558$	-0.347	5.196	0.02834	82–151

Explanations: *r*, *F*, *p*, *Y*, *T*, *P*, *Ndp* as in Tab. 2.

Source: own study.

between years. This was due to the variation of the weather (meteorological parameters) in the different years of the study (Fig. 3). These results are consistent with those obtained by Węgrzyn *et al.* (2022).

Wright path analysis is used in genetics and agricultural sciences, for example, assess elements of yield structure on plant yield or gene–gene interactions (Gozdowski, Martyniak and Mądry, 2008; Wójcik, Kuriata and Lewandowska, 2012; Węgrzyn *et al.*, 2022). To the authors' knowledge, Wright path analysis has so far not been used to assess the influence of meteorological elements on plant development. In our study, the influence of meteorological parameters (*T*, *P* and *Ndp*) on the length of the most important interphases, i.e. the shooting period – heading

and heading – wax maturity stage, was assessed in more detail using this method. *T* was found to have a negative effect on the length of these periods (Tab. 2).

The total effect (A1 = -0.56, A2 = -0.54) and the direct effect of *T* on the length of the stem shooting stage are both negative (A1 = -0.36, A2 = -0.32). In the case of total precipitation, a comparable positive total effect was found in variants A1 and A2 (0.24) on the length of this interphase. The direct effect of *P* is strongly negative (A1 = -0.91, A2 = -1.08) but offset by a strongly positive (A1 = 1.00, A2 = 1.26) effect of *Ndp*. The different development of the direct and indirect effects of total precipitation and number of days with precipitation in the above-mentioned agrotechnical levels may be due to: higher

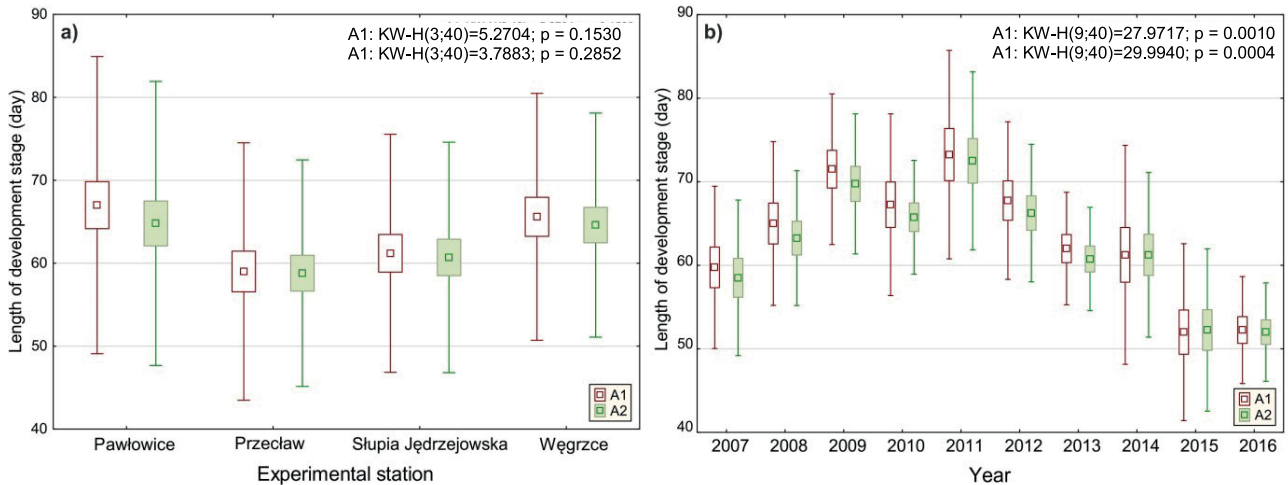


Fig. 4. The yield of winter wheat ( $t \cdot ha^{-1}$ ): a) at the experimental stations, b) in 2007–2016 in two technology variants (A1, A2); A1, A2, KW-H,  $p$  as in Fig. 2; source: own study

nitrogen fertilisation rate, use of antifungals and fungicide protection at A2 level. A different relationship appeared for the effect of  $Ndp$  on the length of the stem shooting – heading stage: the total effect of this parameter is positive, similar in both variants (A1 = 0.46, A2 = 0.48). However, it should be noted that the direct effect (A1 = 1.20, A2 = 1.37) of the parameter  $Ndp$  is much greater than the total effect, as it is compensated by the indirect negative effect of  $P$  (A1 =  $-0.84$ , A2 =  $-0.99$ ) (Tab. 3).

In the analysis of the dependence of the length of the earing – wax maturity stage on meteorological factors, analogous dependences were found as in the case of the heading – wax maturity stage (Tab. 3). The  $T$  negatively influences the length of this period both through total and direct effect, but additionally has a negative effect through the sum of  $P$  in this stage. However, the interaction between total  $P$  and the number of  $Ndp$  is different. The effect of total precipitation sum is strongly positive, meaning that as precipitation sum increases, the length of the period increases. This relationship is confirmed by the direct effect of total precipitation on the length of this stage, which is even stronger but partly compensated by the negative indirect effect of the number of days with precipitation (Tab. 3). In the case of the number of days with precipitation, a positive total effect of this parameter was found (A1 = 0.39, A2 = 0.42) resulting in a prolongation of the heading – wax maturity stage. However, the direct effect of this parameter is weak, negative (A1 =  $-0.25$ , A2 =  $-0.07$ ) but offset by a positive indirect effect of  $P$  (Tab. 3).

According to Weber *et al.* (2011), on light soils and at low fertilisation rates, yields decreased due to rainfall deficiency, whereas on compact soils and high fertilisation, the yield decrease was smaller and was related to excess rainfall. The dependence of wheat yield (A1, A2) on meteorological conditions, as well as on the length of the development periods of this crop, was assessed on the basis of correlations with mean values of air temperature, total precipitation and the number of days with precipitation.

In the A2 variant, the yield was more than  $1 t \cdot ha^{-1}$  higher than in the A1 variant, although this difference proved not statistically significant (Fig. 4a, b). In individual years, the higher technical level (A2) stabilised yields, while the medium-intensive cultivation level A1 made the effect of meteorological conditions on yield more apparent, as manifested by greater yield variability

between years (Fig. 4b). On the basis of regression analysis (Tab. 4), the effect of air temperature on wheat yield turned out to be statistically insignificant in the analysed interphases, while a significant effect of precipitation (from  $r = -0.330$  to  $-0.435$ ) and number of days with precipitation was observed in the stages from stem shooting to earing only in the A1 variant ( $r = -0.316$ ), and in the stage from sowing to full maturity in both cultivation variants ( $r = -0.353$  and  $-0.347$ ). In both cases, a slightly stronger effect of total precipitation on wheat yield was observed than the number of days with precipitation in the mentioned interphases (Tab. 4). A 10 mm increase in precipitation sum caused a yield decrease of 0.05 to  $0.07 t \cdot ha^{-1}$  in these phases, while an increase in the number of days with precipitation by 10 days reduced the yield from 0.28 to  $0.64 t \cdot ha^{-1}$  depending on the level of technology. Lower yield and higher yield variability are observed for weaker soils and unfavourable rainfall distribution (Weber *et al.*, 2011). Globally, temperature negatively affects cereal yields, and a  $1^\circ C$  increase in air temperature can reduce global average wheat yields by 6.0% (Zhao *et al.*, 2017). However, research results on the effects of meteorological parameters on winter wheat yield and development in different geographical regions are heterogeneous. The variability of winter wheat grain yield is dominantly influenced by weather extremes, causing stressful conditions at specific stages of plant development, limiting their yield potential (Martyniak and Kaczyński, 2002; Ziernicka-Wojtaszek and Zawora, 2005; Pirttioja *et al.*, 2015).

## CONCLUSIONS

As a result of the study, it was found that in the years 2007–2016 in the Experimental Station for Variety Evaluation located in the area of the Upper Vistula and Upper Oder River basins there were favourable conditions for winter wheat cultivation. The average grain yield over the study period was high, at  $8.2 t \cdot ha^{-1}$  in the medium-intensive variant and at  $9.3 t \cdot ha^{-1}$  in the intensive variant. Wheat yields in the intensive and medium-intensive variants were negatively correlated with the sum of precipitation and the number of days with precipitation in the sowing – full maturity period, while in the medium-intensive variant also in the stem shooting – heading stage. An increase of 10 mm in total



precipitation caused a decrease in yield of 0.05 to 0.07 t·ha<sup>-1</sup> in these phases, while an increase in the number of days with precipitation by 10 days reduced the yield by 0.28 to 0.64 t·ha<sup>-1</sup>.

The impact of meteorological conditions on the length of development periods of winter wheat varied. Air temperature had a significant, negative effect on the length in two periods; stem shooting – heading and earing – wax maturity, which means a shortening of the developmental period of winter wheat at a higher temperature. An increase of 1°C in air temperature resulted in a shortening of the stages stem shooting to earing and earing to full maturity by 2.54 and 2.84 days, respectively.

The effect of total precipitation and the number of days with precipitation is strongly positive, implying a lengthening of wheat development periods. As total precipitation increased, the length of the periods: earing – wax maturity, earing – full maturity and sowing – full maturity increased, with these parameters most strongly positively related to the length of the earing – full maturity period. An increase of 10 mm of precipitation in the periods sowing – full maturity and earing – full maturity resulted in the lengthening of these stages by 0.5 and 1.0 days, respectively. The number of days with precipitation also significantly influenced the lengthening of the shooting – heading period. Increasing the number of days with precipitation by 10 days in the stages sowing – full maturity and earing – wax maturity resulted in a lengthening of these periods by 4.1 to 4.4 and 7 to 7.5 days for the A1 and A2 cropping technologies, respectively.

The results obtained proved that a higher level of cultivation intensity increases and stabilises winter wheat yields, and thus wheat yields depend less on weather variability and justify higher costs mainly incurred for plant protection. The observed negative effect of temperature causing shortening of wheat interphase duration confirms the need for multidirectional research in the aspect of breeding new winter wheat varieties characterised by a lower tendency to shorten the generative development period. However, please take into consideration that the negative effect of temperature on shortening the interfacial time is not reflected in the production effects of wheat.

## ACKNOWLEDGEMENTS

This work was supported by the European Union Horizon 2020 Research and Innovation Program (ecostack; grant agreement No. 773554).

## CONFLICT OF INTERESTS

All authors declare that they have no conflict of interests.

## REFERENCES

- Challinor, A. *et al.* (2014) “A meta-analysis of crop yield under climate change and adaptation,” *Nature Climate Change*, 4, pp. 287–291. Available at: <https://doi.org/10.1038/nclimate2153>.
- Dízková, P. *et al.* (2022) “Modeling phenological phases of winter wheat based on temperature and the start of the growing season,” *Atmosphere*, 13, 1854. Available at: <https://doi.org/10.3390/atmos13111854>.
- Dubcovsky, J. *et al.* (2006) “Effect of photoperiod on the regulation of wheat vernalization genes VRN1 and VRN2,” *Plant Molecular Biology*, 60, pp. 469–480. Available at: <https://doi.org/10.1007/s11103-005-4814-2>.
- FAO STAT (no date) *Value of Agricultural Production*. Available at: [www.fao.org/faostat/en/#data/QV](http://www.fao.org/faostat/en/#data/QV) (Accessed: April 10, 2023).
- Galant, H. and Andruszczak, S. (2004) “Wpływ warunków meteorologicznych na długość międzyfaz żyta ozimego [Influence of meteorological conditions on the length of winter rye interphase],” *Annales UMCS Lublin – Polonia*, 59(2), Sect. E, pp. 833–838.
- Gelaro, R. *et al.* (2017) “The modern-era retrospective analysis for research and applications, Version 2 (MERRA-2),” *Journal of Climate*, pp. 5419–5454. Available at: <https://doi.org/10.1175/JCLI-D-16-0758.1>.
- Gozdowski, D., Martyniak, D. and Mądry, W. (2008) “Zastosowanie analizy ścieżek do oceny determinacji plonu nasion życicy trwałej [Application of path analysis to evaluate seed yield determination of perennial ryegrass],” *Biuletyn Instytutu Hodowli i Aklimatyzacji Roslin*, 247, pp. 89–97.
- GUS (2022) *Rocznik Statystyczny Rzeczypospolitej Polskiej 2022*. Warszawa: Główny Urząd Statystyczny. Available at: <https://stat.gov.pl/obszary-tematyczne/roczniki-statystyczne/roczniki-statystyczne/rocznik-statystyczny-rzeczypospolitej-polskiej-2022,2,22.html> (Accessed: April 10, 2023).
- IPCC (2007) *Climate Change 2007: Impacts, Adaptation and Vulnerability. Working Group II Contribution to the Fourth Assessment Report of the Intergovernmental Panel on Climate Change*. M.L. Parry *et al.* (eds.). Cambridge, UK: Cambridge University Press. Available at: [https://www.ipcc.ch/site/assets/uploads/2018/03/ar4\\_wg2\\_full\\_report.pdf](https://www.ipcc.ch/site/assets/uploads/2018/03/ar4_wg2_full_report.pdf) (Accessed: April 14, 2023)
- Jadczyzyn, J. and Bartosiewicz, B. (2020) “Procesy osuszania i degradacji gleb [Soil drainage and degradation processes],” *Studia i Raporty IUNG-PIB*, 64(18), pp. 49–60. Available at: <https://doi.org/10.26114/sir.iung.2020.64.03>.
- Kanapickas, A. *et al.* (2022) “Effects of climatic and cultivar changes on winter wheat phenology in central Lithuania,” *International Journal of Biometeorology*, 66, pp. 2009–2020. Available at: <https://doi.org/10.1007/s00484-022-02336-9>.
- Karczmarczyk, S. and Nowak, L. (2006) *Nawadnianie roślin [Irrigation of plants]*. Poznań: PWRiL.
- Kołodziej, J. and Kulig, B. (2007) “Wpływ terminu i długości występowania faz rozwojowych na kształtowanie się plonu ziarna i wybranych cech owsa [Influence of development stages dates and lengths on grain yield and selected characteristics of oats],” *Acta Agrophysica*, 9(2), pp. 389–398.
- Kołodziejczyk, M., Szmigiel, A. and Kulig, B. (2009) “Plonowanie wybranych odmian pszenicy jarej w zależności od poziomu agrotechniki [Yielding of selected spring wheat cultivars depending on technology level],” *Fragmenta Agronomica*, 26(3), pp. 58–67.
- Martyniak, L. and Kaczyński, L. (2002) “Niedobory i nadmiary opadów a produktywność pszenicy ozimej [Shortage of and excessive precipitation and winter wheat productivity],” *Acta Scientiarum Polonorum. Agricultura*, 1(1) pp. 73–79.
- NASA LaRC (no date) *POWER Data Access Viewer*. NASA Langley Research Center. Available at: <https://power.larc.nasa.gov/data-access-viewer/> (Accessed: April 14, 2023).
- Newton, A., Johnson, S. and Gregory, P. (2011) “Implications of climate change for diseases, crop yields and food security,” *Euphytica*, 179, pp. 3–18. Available at: <https://doi.org/10.1007/s10681-011-0359-1>.

- Pirttioja, N.T. *et al.* (2015) "A crop model ensemble analysis of temperature and precipitation effects on wheat yield across a European transect using impact response surfaces," *Climate Research*, 65, pp. 87–105. Available at: <https://doi.org/10.3354/cr01322>.
- Podolska, G. (2018) "Plon i jakość ziarna pszenicy ozimej uprawianej w warunkach wysokiej temperatury oraz stresu suszy [Grain yield and quality of winter wheat grown under high temperature and drought stress conditions]," in J. Grabiński and J. Podleśny (eds.) *Technologie produkcji roślinnej w warunkach zmieniającego się klimatu [Crop production technologies under changing climate condition]*. *Studia i Raporty IUNG-PIB*, 57(11), pp. 9–21. Available at: <https://doi.org/10.26114/sir.iung.2018.57.01>.
- Ray, D. *et al.* (2019) "Climate change has likely already affected global food production," *PLOS ONE*, 14(5), e0217148. Available at: <https://doi.org/10.1371/journal.pone.0217148>.
- Skowera, B., Kopcińska, J. and Bokwa, A. (2016) "Changes in the structure of days with precipitation in Southern Poland in 1971–2010," *IDŐJÁRÁS Quarterly Journal of the Hungarian Meteorological Service*, 120(4), pp. 365–381.
- Statista (2022) *Global leading wheat producers 2021/2022*. Available at: <https://www.statista.com/statistics/237912/global-top-wheat-producing-countries/> (Accessed: April 17, 2023).
- Weber, R. *et al.* (2011) "Interakcja odmian pszenicy ozimej z warunkami środowiska w kształtowaniu poziomu plonowania na podstawie wyników PDO na dolnym Śląsku [Interaction of winter wheat varieties with conditions of the habitat in the formation of the yielding levels on the basis of post-registration cultivar testing in lower Silesia]," *Annales UMCS, Agricultura*, 66(2), pp. 1–10 Available at: <https://doi.org/10.2478/v10081-011-0004-x>.
- Węgrzyn, A. *et al.* (2022) "Effect of selected meteorological factors on the growth rate and seed yield of winter wheat – A case study," *Agronomy*, 12(12), 2924. Available at: <https://doi.org/10.3390/agronomy12122924>.
- Wing, I., Cian De, E. and Mistry, M. (2021) "Global vulnerability of crop yields to climate change," *Journal of Environmental Economics and Management*, 109, 102462. Available at: <https://doi.org/10.1016/j.jeem.2021.102462>.
- Wójcik, K., Kuriata, R. and Lewandowska, S. (2012) "Odziedziczalność i współzależność cech rolniczych kukurydzy [Heritability and relationships between maize agricultural traits]," *Biuletyn Instytutu Hodowli i Aklimatyzacji Roslin*, 264, pp. 183–188. Available at: <https://doi.org/10.37317/biul-2012-0068>.
- Wójcik, M. and Miętus, M. (2014) "Niektóre cechy wieloletniej zmienności temperatury powietrza w Polsce (1951–2010) [Some features of long-term variability in air temperature in Poland (1951–2010)]," *Przegląd Geograficzny*, 86(3), pp. 339–364. Available at: <https://doi.org/10.7163/PrzG.2014.3.3>.
- Ye, Z. *et al.* (2020) "Impacts of 1.5°C and 2.0°C global warming above pre-industrial on potential winter wheat production of China," *European Journal of Agronomy*, 120, 126149. Available at: <https://doi.org/10.1016/j.eja.2020.126149>.
- Yue, Y., Zhang, P. and Shang, Y. (2019) "The potential global distribution and dynamics of wheat under multiple climate change scenarios," *Science of The Total Environment*, 688, pp. 1308–1318. Available at: <https://doi.org/10.1016/j.scitotenv.2019.06.153>.
- Xiao, D. and Tao, F. (2014) "Contributions of cultivars, management and climate change to winter wheat yield in the North China Plain in the past three decades," *European Journal of Agronomy*, 52, pp. 112–122. Available at: <https://doi.org/10.1016/j.eja.2013.09.020>.
- Zhao, C. *et al.* (2017) "Temperature increase reduces global yields of major crops in four independent estimates," *Proceedings of the National Academy of Sciences of the United States of America*, 114(35), pp. 9326–9331. Available at: <https://doi.org/10.1073/pnas.1701762114>.
- Ziernicka-Wojtaszek, A. (2020) "Pluviothermal regionalization of Poland in light of present-day climate change," *Polish Journal of Environmental Studies*, 29(1), pp. 989–996. Available at: <https://doi.org/10.15244/pjoes/99976>.
- Ziernicka-Wojtaszek, A. and Kopcińska, J. (2020) "Variation in atmospheric precipitation in Poland in the years 2001–2018," *Atmosphere*, 11(8), 794. Available at: <https://doi.org/10.3390/atmos11080794>.
- Ziernicka-Wojtaszek, A. and Zawora, T. (2005) "Niedobory i nadmiary opadów dla pszenicy ozimej w latach ekstremalnych na obszarze Polski (1971–2000) [Shortages and excesses of precipitation for winter wheat in extreme years in Poland (1971–2000)]," *Woda-Środowisko-Obszary Wiejskie*, 5(14) pp. 375–382.