

AN INNOVATIVE ECOLOGICAL HYBRID REFRIGERATION CYCLE FOR HIGH POWER REFRIGERATION FACILITY

Piotr Cyklis^{1,2*}, Karina Janisz²

¹ Laboratory of Thermodynamics and Thermal Machines Measurements, Institute of Thermal and Process Engineering, Cracow University of Technology, Jana Pawła II 37, 31-864 Krakow, Poland

² Technical Institute, State Higher Vocational School in Nowy Sącz, Zamenhofa 1a, Nowy Sącz 33-300, Poland

Searching for new refrigerants is one of the most significant scientific problems in refrigeration. There are ecological refrigerants commonly known: H₂O and CO₂. H₂O and CO₂ known as natural refrigerants, but they have problems: a high freezing point of H₂O and a low triple point of CO₂. These problems can be solved by the application of a hybrid sorption-compression refrigeration cycle. The cycle combines the application possibility of H₂O in the high temperature sorption stage and the low temperature application of CO₂ in the compression stage. This solution gives significant energy savings in comparison with the two-stage compressor cycle and with the one-stage transcritical CO₂ cycle. Besides, the sorption cycle may be powered by low temperature waste heat or renewable heat. This is an original idea of the authors. In the paper an analysis of the possible extension of this solution for high capacity industrial refrigeration is presented. The estimated energy savings as well as TEWI (Total Equivalent Warming Impact) index for ecological gains are calculated.

Keywords: hybrid ecological refrigeration cycle, adsorption, compression

1. INTRODUCTION

Refrigeration nowadays is searching for new refrigerants, since the Montreal Protocol (1987) regulations strongly affected the refrigerant market as well as scientific research trends. The new findings, for example, R1234yf meet the Montreal Protocol requirements in terms of air pollution but have many disadvantages, which makes it very sensible to look for other opportunities. The application of carbon dioxide as a refrigerant is becoming increasingly popular. However due to the temperature limit and resulting efficiency limitation CO₂ is used mostly for the LT (Low Temperature) stage compression cycle. In the HT (High Temperature) cycle another refrigerant, such as for example R410A, is used. A number of papers on CO₂ applications in different refrigerating cycles has been published in recent years (Suamir et al., 2012; Suamir and Tassou, 2013; Yamaguchi and Zhang, 2009). There is also interest in modelling and simulation of adsorption heat pumps, which allows the analysis of the winter cycle of the combined systems (Evola et al., 2013; Starace et al., 2014). The range of produced absorption or adsorption units is from 8kW up to 21MW cooling capacity. The choice of adsorption or absorption technology depends on load, price, and most of all temperature of the heat source for desorber heating (Ullah et al., 2013). The COP of the absorption cycle with high temperature generation (above 120°C) may be higher than that for adsorption using two stage, double effect cycles (Misra et al., 2003; Misra et al., 2005). For lower temperature sources such as solar cooling or central heating network, the application of absorption may not be possible at all. Different heat sources for cooling or refrigerating have been also analysed in

* Corresponding author, e-mail: pcyklis@mech.pk.edu.pl

a number of published papers (Joudi and Dhaidan, 2001; Saha et al., 2003; Syed et al., 2005; Wang et al., 2000). The adsorption technology can work using 65°C as the driving temperature for a desorber (Habib et al., 2011; Saha et al., 2003; Saha, et al., 2006). This is the main difference between the possibilities of contemporary industrial adsorption and absorption technologies. There is also scientific interest in hybrid sorption-compression cycles, their application however, has other aims and refrigerants than presented here (Banker et al., 2008; Garimella et al., 2011; Han et al., 2013; Zheng and Meng, 2012).

The problem with H₂O application as a refrigerant is the triple point 0.01 °C and the CO₂ cycle has reduced COP terminology explanation above the critical point 31 °C. A possible solution of this problem is a cascade system combining two cycles: low temperature compression stage (LT) with CO₂ and high temperature sorption stage (HT) with H₂O. There are ecological solutions for HT cycle: adsorption or absorption cycles. Both can be driven with waste heat or solar heat. This reduces the electric energy consumption. The solar driven sorption only cycles have been reported earlier in previous publications (Cyklis and Brak, 2008; Florides, 2003; Grzebielec, 2009; Hassan et al., 2012; Kim and Infante Ferreira, 2003; Kim and Infante Ferreira, 2008; Wang et al., 2000; Zhang et al., 2011).

2. OBJECTIVE, SCOPE AND METHODOLOGY OF WORK

The idea of hybrid cascade system absorption-compression has been analysed by (Anand et al. , 2013; Cimsit and Ozturk, 2012; Fernandez-Serara et al., 2006). The design in Fig.1. consists of an efficient heat exchanger combining the CO₂ condenser with H₂O evaporator. However, this reduces its possibility for direct use of a cooling tower to cool down the condenser in cold seasons, while sorption system itself can be applied for heating as a heat pump (Chen et al., 2010; Grzebielec, 2009; Saha et al., 2003; Starace et al., 2014; Wang et al., 2005; Ward et al., 1979).

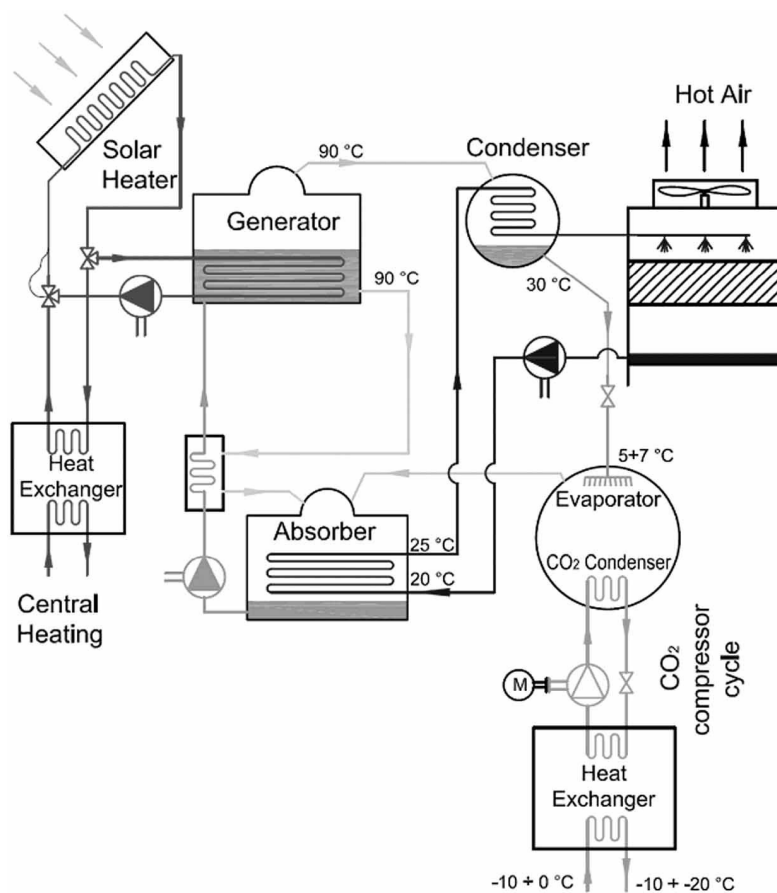


Fig. 1. The hybrid compression-absorption system idea

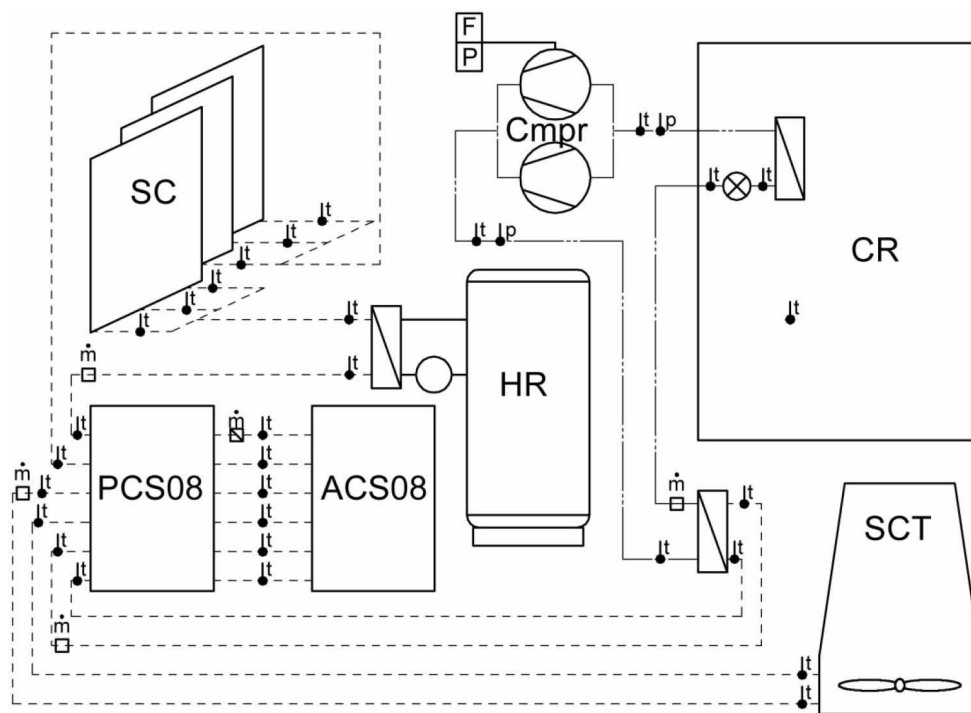


Fig. 2. The hybrid compression-adsorption laboratory stand. SC – solar collectors, PCS08 – pumps, ACS08 – adsorption unit, SCT – sprayed cooling tower, HR – heat container, CR – refrigeration chamber, Cmpr – compressors

The concept of the presented system is the composition of the HT adsorption with LT compression cycle shown in Fig. 2. This original idea has been previously published elsewhere (Cyklis and Kantor, 2011a; 2011b). This idea has been a basis for the test system constructed in the Laboratory of Thermodynamics and Thermal Machines Measurements at Cracow University of Technology. The core of the cycle is the ACS08 adsorption system (SorTech, 2009), with about 8 kW nominal cooling power. The ACS08 is connected to the system using a pumping station (PCS08). The compression CO₂ cycle is composed of two compressors Dorin CD300H (Cmpr) working in a parallel cascade mode. The solar heat source (SC) comprises 17 vacuum tube solar collectors HEWALEX KSR-10 with a net area of about 17.2 m². The system has already been operated for two years. During system operation many tests have been carried out with different temperatures of heat source, cooling tower (SCT) and resulting cooling temperature for the CO₂ condenser. There is also a heat container (HR) used for solar heat storage. An example of one complete test cycle is shown in Fig. 3.

Testing equipment used:

- glycol flow: turbine flow meters HOFFER HO1/2x1/2 class of accuracy 0.25% with impulse meters KEP BATRTM2AC class 0.01%,
- CO₂ flow: SIEMENS SITRANS F C MASSFLO 2000 (Coriolis type) class 0.1% on liquid side,
- Pressure: Vegabar 17 transducers class 0.5%,
- temperature: Pt100, current loop class 0.3%,
- electric power: LUMEL M30P-LCTM74 meters class 0.5%.
- Data acquisition system operates with eight 16-bit ICP DAS measuring cards with the range of ±20 mA, 0~20 mA, 4~20 mA class 0.1%.
- For data acquisition PC software have been prepared with visualization possibilities. The system has been connected via the RS485 port using DCON protocol.

All calculated enthalpy, density and other liquid properties are related to (NIST, 2014).

Estimated measurement uncertainty for enthalpy of all liquids is better than 4.3%, calculated uncertainty for electric power reading including averaging is about 1%.

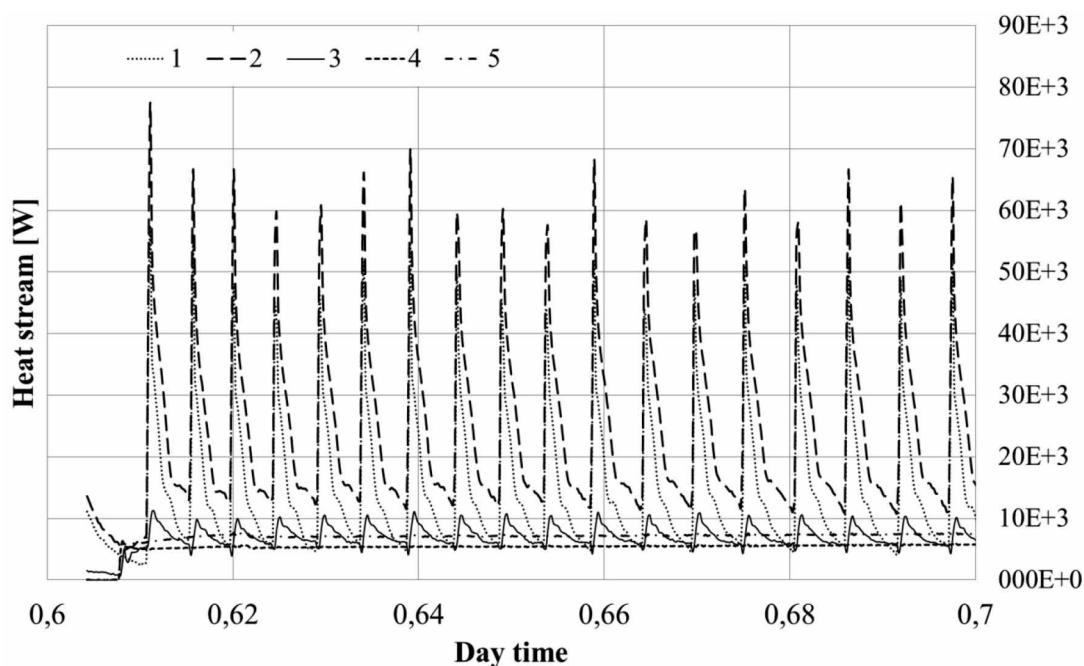


Fig. 3. The heat streams during the steady system operation: 1 – heat source for adsorption, 2 – cooling tower, 3 – adsorption cooling power, 4 – CO₂ evaporating heat, 5 – CO₂ condensing heat

It has been found that within the range of solar temperature of 65-95°C, no significant influence of the temperature on the adsorption cycle performance has been detected. Also a periodic adsorption system action has no influence on the compression LT part of the cascade work. In Fig. 4 a summary of the results of the tests is presented. Two ranges of CO₂ condensing temperature are depicted; the higher for condenser cooling directly forms cooling tower in cold seasons. There is also a comparison between the pure compression cycle and two stage cycles. The developed system efficiency in terms of EER coefficient is higher than compression only cycles.

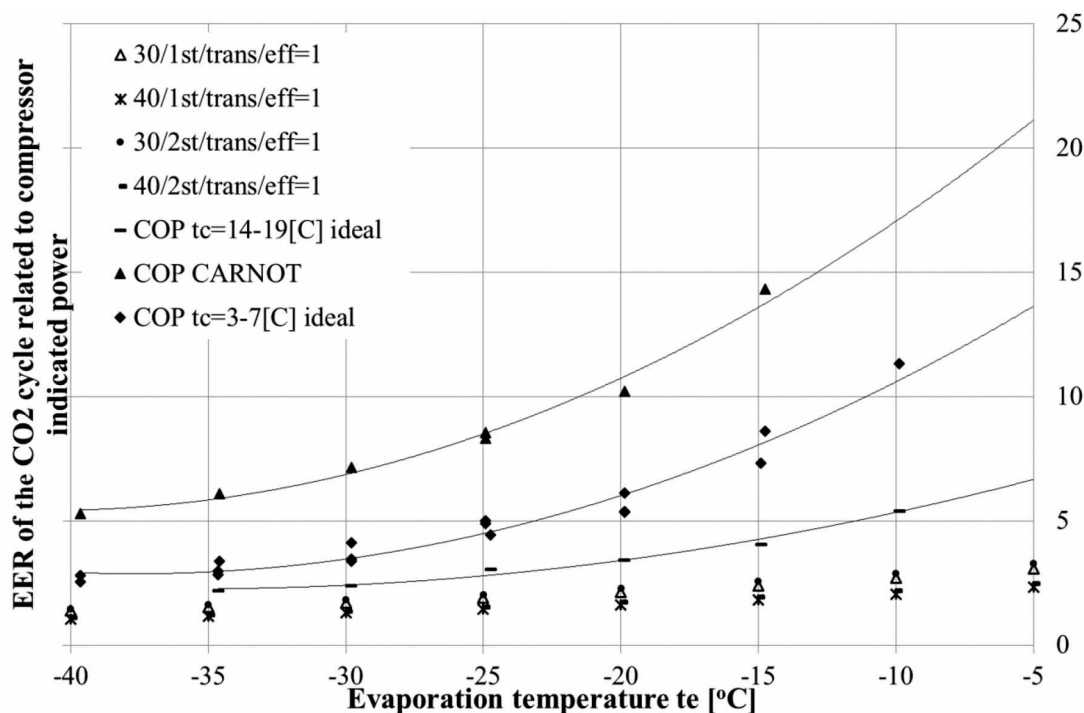


Fig. 4. EER efficiency of the hybrid cycle related to the CO₂ compressor indicated power for two condensing temperatures 14-19°C and 3-7°C. Also pure compression CO₂ one and two stage transcritical cycles are shown for comparison, with Carnot cycle as reference

One of the ecological coefficients commonly used for comparison of refrigerating systems is TEWI (CO₂ kg equivalent). It has a formula:

$$TEWI = GWP \cdot L \cdot n + GWP \cdot m \cdot (1-f) + n \cdot E \cdot z \quad (1)$$

$$E = N \cdot tr \quad (2)$$

Five cycles have been selected for comparison:

- compression two stage cycle with CO₂ and R410 as the base line result for comparison in Figs. 5 and 6 (zero horizontal axis)
- transcritical CO₂ one stage
- transcritical CO₂ two stages
- hybrid adsorption-compression with cooling directly from sprayed cooling tower without adsorption (14-19°C of CO₂ condensing)
- hybrid adsorption-compression with cooling from adsorption (3-7°C of CO₂ condensing).

Additionally in Fig. 5 a comparison with idealised hybrid adsorption-compression cycle calculated with no energy loss assumption has been presented.

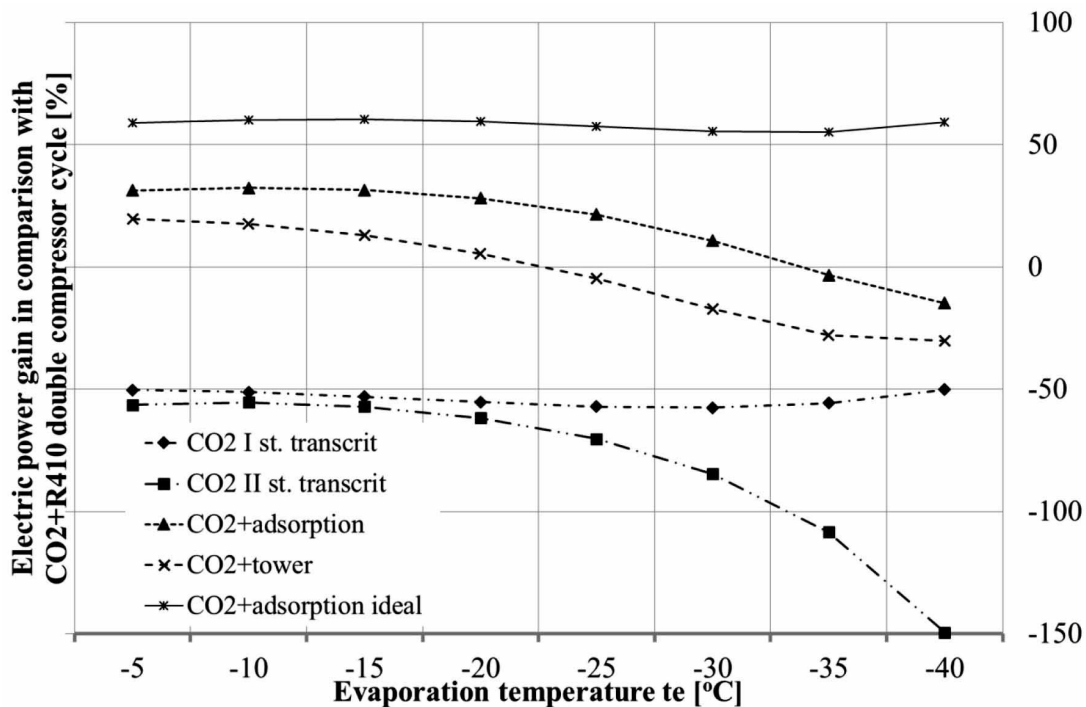


Fig. 5. Total electric power including auxiliary power consumption for cooling tower, pumps etc. for five cycles

The analysis has been provided for the evaporation temperature of CO₂ ranging from -40 °C up to -5°C (Figs. 5 and 6). In Figs. 5 and 6 the new hybrid adsorption-compression cycle for refrigeration both energy consumption and TEWI coefficient are significantly lower than those for the conventional compression only cycles. In case of energy efficiency up to 30% of energy could be reduced, while for the TEWI coefficient improvement higher than 60% could be expected.

In case of CO₂ one or two stage compression transcritical cycles, the TEWI values are by 10-20% lower than CO₂ + R410 but the electric power is significantly higher, so this solution is not realistic for practical usage. Besides the pressures are about 10 MPa, which requires a special system design.

The CO₂+tower cycle has been used for low ambient temperature. In this case CO₂ condenser has been cooled directly from the sprayed cooling tower. The adsorption for low ambient temperature may be reconfigured for heat pump action. The TEWI results in this case are close to adsorption-compression

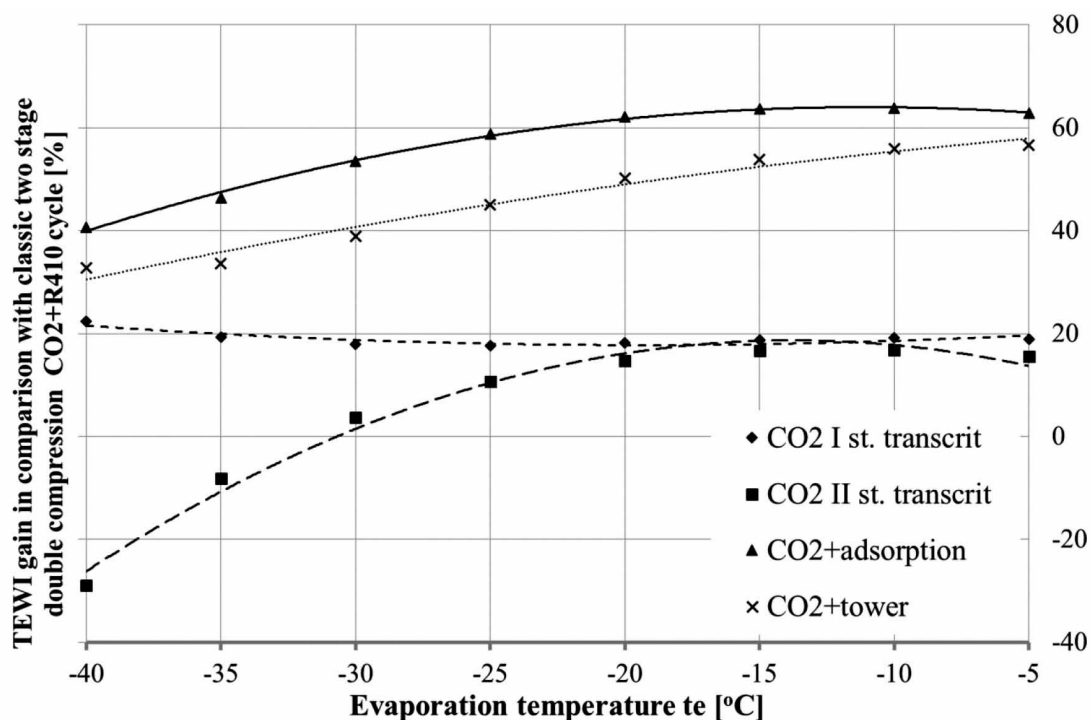


Fig. 6. TEWI index including auxiliary power consumption for cooling tower, pumps etc. for five cycles

cycle, but the energetic values are by about 10% lower. Based on the above experimental results, for a small system the idea of hybrid refrigeration has been implemented for a design of an industrial high power cold storage. The waste heat of the industrial process (combustion gases cooling) was considered as a source for heat supply. The schematic drawing of the plant is shown in Fig. 7, and the technical data for refrigeration storage is given in Table 1.

Table 1. Cold storage requirements

	Value	Unit
Cold storage capacity	2000	t/24h
Refrigerating tunnel (t/24h)	-35	°C
Cold room storage	-25	°C
Cold room depository	-25	°C
Dispense chamber	4	°C
Refrigerating power requested	115	kW
Requirements for CO ₂ cycle		
t_e	-45	°C
t_c	7	°C
Cooling capacity	115	kW

The working parameters for the LT compression cycle have been calculated using Coolpack software (Skovrup et al., 2012). The calculated condenser power for CO₂ is 188 kW, with condensing temperature of 7 °C. On this basis the adsorption unit SCAD 090 with a nominal cooling power of 252.2 kW has been chosen. A Grasso HP45 compressor was chosen for the CO₂ cycle. Wet cooling tower has to remove 521 kW of the thermal power at 29/34 °C, so a CDW600 has been chosen. The efficiencies for each subsystem have been introduced on the basis of laboratory stand small scale tests results.

A comparison between energy efficiency and TEWI has been calculated for five cycles – both hybrid and/or compression only. A comparison between energy and TEWI has been given for five cycle designs in Fig. 8. The reduction in yearly energy consumption for this particular system exceeds 340 MWh for

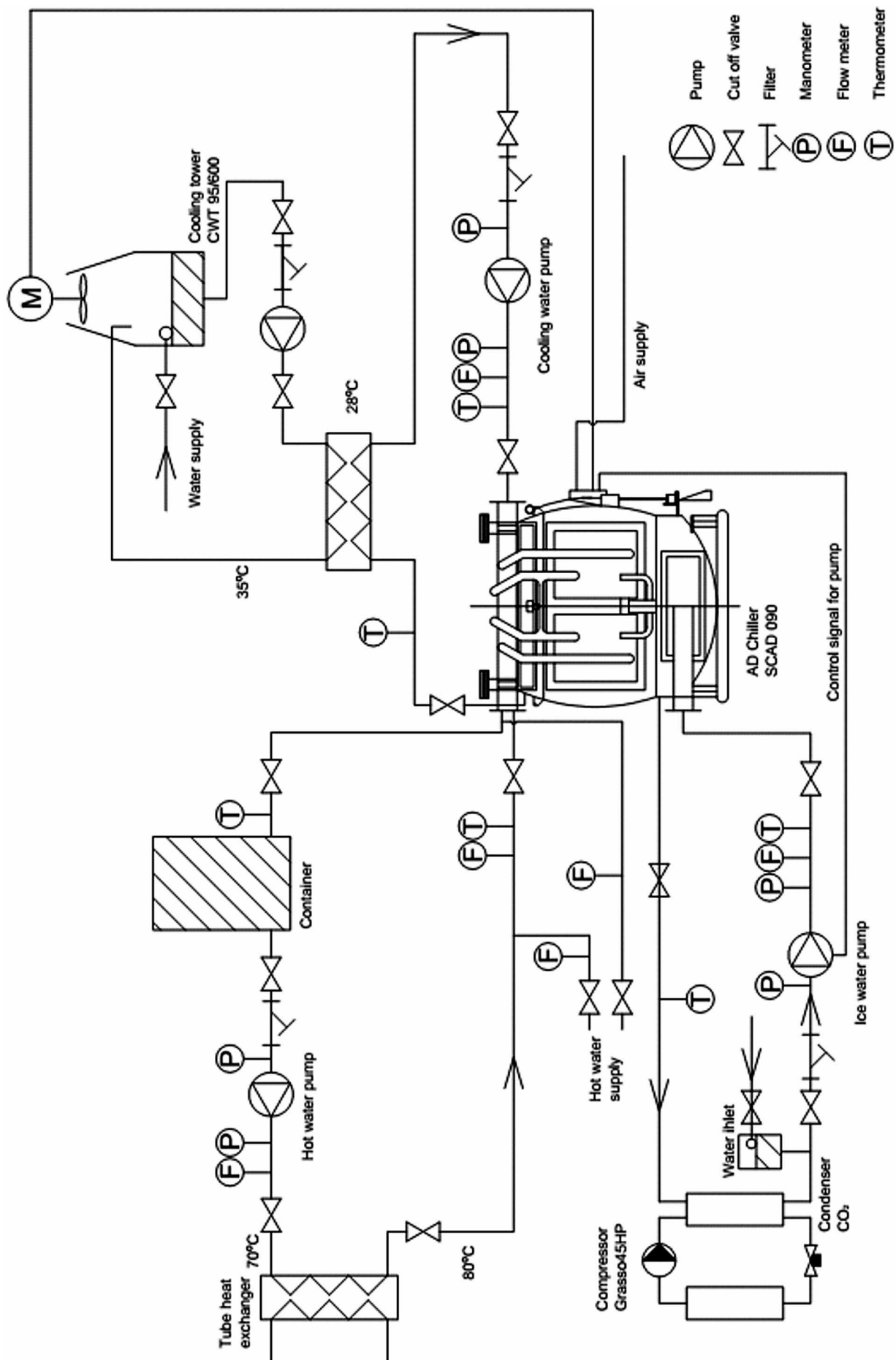


Fig. 7. Schematic design of the prototype industrial hybrid refrigeration system (115 kW cooling power)

the hybrid cycle, which is equivalent to 29,000 tons of CO₂ (TEWI), in comparison with the R410+CO₂ compression two stage cycle. Usually the results for high power adsorption cycles are better than those for smaller cycles, so the results shown in Fig. 8 may be considered as conservative.

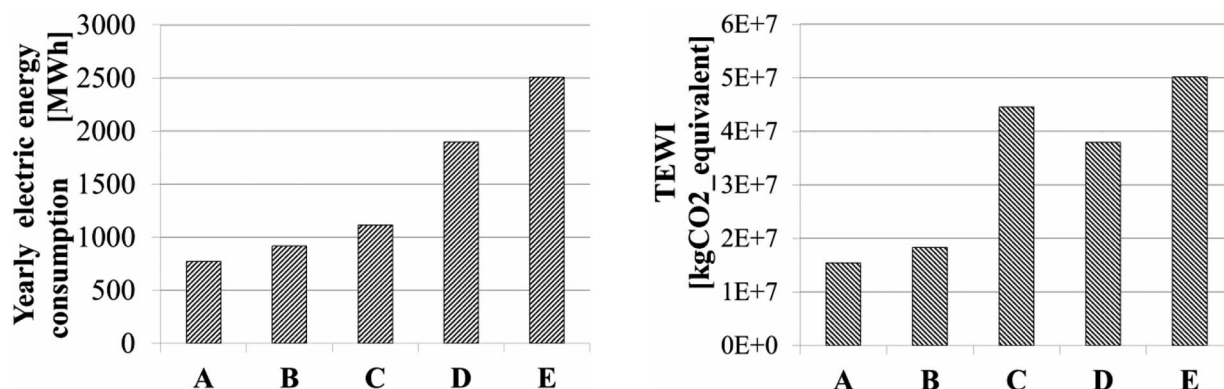


Fig. 8. Comparison of energy consumption and TEWI for five cycle designs
 A- CO₂+adsorption, B- CO₂+tower, C- CO₂+R410, D- one stage CO₂, E- double stage CO₂

3. CONCLUSIONS

The application of hybrid adsorption/compression cycle for high capacity industrial refrigeration, using waste or a renewable heat source for adsorption has been analysed in the paper. The investment costs increase for high power adsorber, so the compression refrigeration system seems to be less expensive. However, when considering energy consumption reduction influencing the yearly operating costs, the combined economy of the new solution is promising. The analysis shows that for the evaporation temperature of CO₂ ranging from -40 °C up to -5 °C the new hybrid adsorption-compression cycle for refrigeration both energy consumption and TEWI coefficient are significantly lower than those for the conventional two stages compression cycles. In case of energy efficiency up to 30% of energy could be reduced, while for the TEWI coefficient improvement higher than 60% could be expected. The results for higher capacity refrigeration systems will be even better, since the electric power consumption for secondary equipment (measurement, controls, pumps etc.) is comparatively lower.

Anyhow, in the countries where adsorption systems play important roles in industry pure adsorption systems are used only for cooling or air conditioning. The above presented innovative hybrid cycle provides another possibility for cold effect production utilisation, which expands options of waste energy utilisation. Besides, the TEWI factors are for a hybrid cycle much lower than those for a compression cycle, so the system is purely ecological considering that only natural refrigerants are used. Additionally, no environmental pollution occurs when the cycle is opened to ambient air during maintenance or system failure.

This publication was written as a part of the project financed from the funds of the Polish National Centre of Research and Development (agreement no.: N R06 0002 10 0936/R/T02/2010/10)

SYMBOLS

E	energy use of the cycle per year, kWh
EER	Energy Efficiency Rating
f	refrigerant recovery coefficient, -
GWP	Global Warming Potential kg equivalent, with the relationship to CO ₂
L	emission to the atmosphere, kg/yr

m	amount of refrigerant in installation, kg
N	supplied electric power of the cycle, kW
n	life of the cycle, yr
tr	yearly number of working hours, h
TEWI	Total Equivalent Warming Potential
z	CO ₂ emission for the electric energy; in Poland $z = 0.94$ kgCO ₂ /kWh

REFERENCES

- Anand A., Gupta A., Tyagi S.K., 2013. Simulation studies of refrigeration cycles: A review. *Renewable Sustainable Energy Rev.*, 17, 260-277. DOI: 10.1016/j.rser.2012.09.021.
- Banker N., Dutta P., Prasad M., Srinivasan K., 2008. Performance studies on mechanical adsorption hybrid compression refrigeration cycles with HFC 134a. *Int. J. Refrig.*, 31, 1398–1406. DOI:10.1016/j.ijrefrig.2008.03.009.
- Chen C., Wang R., Xia Z., Kiplagat J., Lu Z., 2010. Study on a compact silica gel–water adsorption chiller without vacuum valves: Design and experimental study. *Appl. Energy*, 87, 2673–2681. DOI: 10.1016/j.apenergy.2010.03.022.
- Cimsit C., Ozturk I.T., 2012. Analysis of compression-absorption cascade refrigeration cycles. *Appl. Therm. Eng.*, 40, 311-317. DOI: 10.1016/j.applthermaleng.2012.02.035.
- Cyklis P., Brak, G., 2008. LiBr-H₂O absorption cycle design for whole year use in medium climate conditions. *Transactions of the Institute of Fluid-Flow Machinery*, 121, 49-66.
- Cyklis P., Kantor R., 2011a. Thermodynamic analysis of hybrid sorption-compression two stage refrigerating systems. *XXIII International Congress of Refrigeration*. Prague, 1181-1188.
- Cyklis P., Kantor R., 2011b. Concept of hybrid adsorption-compression refrigeration system. *I Congress of Thermodynamics*, Poznan, Poland, 422-428.
- Evola G., Le Pierre's N., Boudehenn F., Papillon P., 2013. Proposal and validation of a model for the dynamic simulation of a solar-assisted single-stage LiBr/water absorption chiller. *Int. J. Refrig.*, 36, 1015-1028. DOI: 10.1016/j.ijrefrig.2012.10.013.
- Fernandez-Seara J., Sieres J., Vazquez M., 2006. Compression–absorption cascade refrigeration system. *Appl. Therm. Eng.*, 26, 502–512. DOI: 10.1016/j.applthermaleng.2005.07.015.
- Florides G.A., 2003. Design and construction of a LiBr – water absorption machine. *Energy Convers. Manage.*, 44, 2483–2508. DOI: 10.1016/S0196-8904(03)00006-2.
- Garimella S., Brown A., Nagavarapu A.K., 2011. Waste heat driven absorption/vapor-compression cascade refrigeration system for megawatt scale, high-flux, low-temperature cooling. *Int. J. Refrig.*, 34, 1776-1785. DOI: 10.1016/j.ijrefrig.2011.05.017.
- Grzebielec A., 2009. Experimental study on adsorption heat pump. *Arch. Thermodyn.*, 30, 189-200.
- Habib K., Saha B.B., Chakraborty A., Koyama Sh., Srinivasan K., 2011. Performance evaluation of combined adsorption refrigeration cycles. *Int. J. Refrig.*, 34, 129-137. DOI: 10.1016/j.ijrefrig.2010.09.005.
- Han W., Sun L., Zheng D., Jin H., Ma S., Jing X., 2013. New hybrid absorption–compression refrigeration system based on cascade use of mid-temperature waste heat. *Appl. Energy*, 106, 383–390. DOI: 10.1016/j.apenergy.2013.01.067.
- Hassan H.Z., Mohamad A.A., Al-Ansary H.A., 2012. Development of a continuously operating solar-driven adsorption cooling system: Thermodynamic analysis and parametric study. *Appl. Therm. Eng.*, 48, 332-341. DOI: 10.1016/j.applthermaleng.2012.04.040.
- Joudi K., Dhaidan N., 2001. Application of solar assisted heating and desiccant cooling systems for a domestic building. *Energy Convers. Manage.*, 42, 995-1022. DOI:10.1016/S0196- 8904(00)00111-4.
- Kim D.S., Infante Ferreira CA., 2003. *Solar absorption cooling. 1st Progress Report. Report K-332*, Delft University of Technology.
- Kim D., Infante Ferreira C., 2008. Solar refrigeration options – A state-of-the-art review. *Int. J. Refrig.*, 31, 3-15. DOI: 10.1016/j.ijrefrig.2007.07.011.
- Misra R., Sahoo P., Gupta A., 2005. Thermoeconomic evaluation and optimization of a double-effect H₂O/LiBr vapour-absorption refrigeration system. *Int. J. Refrig.*, 28, 331–343. DOI: 10.1016/j.ijrefrig.2004.09.006.
- Misra R., Sahoo P., Sahoo S., Gupta A., 2003. Thermoeconomic optimization of a single effect water/LiBr vapour absorption refrigeration system. *Int. J. Refrig.*, 26, 158–169. DOI: 10.1016/S0140-7007(02)00086-5.
- NIST, (2014). *NIST Standard Reference Data*. Available at: www.nist.gov/srd/nist23.cfm.

- Saha B., El-Sharkawya L., Chakrabortya A., Koyama S., Banker N., Duttab P., Srinivasana K., 2006. Evaluation of minimum desorption temperatures of thermal compressors in adsorption refrigeration cycles. *Int. J. Refrig.*, 29, 1175-1181. DOI: 10.1016/j.ijrefrig.2006.01.005.
- Saha B., Koyama S., Kashiwagi T., Akisawa A., Ng K., Chua H., 2003. Waste heat driven dual-mode, multi-stage, multi-bed regenerative adsorption system. *Int. J. Refrig.*, 26, 749-757. DOI: 10.1016/S0140-7007(03)00074-4.
- Saha B., Koyama S., Lee J., Kuwahara K., Alam K., Hamamoto Y., Kashiwagi T., 2003. Performance evaluation of a low-temperature waste heat driven multi-bed adsorption chiller. *Int. J. Multiphase Flow*, 29, 1249-1263. DOI: 10.1016/S0301-9322(03)00103-4.
- Skovrup M.J., Jakobsen A., Rasmussen B. D., Andersen S., 2012. *CoolPack IPU*. Available at: <http://en.ipu.dk/Indhold/refrigeration-and-energy-technology/coolpack.aspx>.
- SorTech., 2009. *SorTech Adsorption Chiller ACS 08/ACS 15, Design manual*. Version 2.2. Halle: SorTech. Pobrano 8 15, 2014.
- Starace G., Carluccio F., Bongs C., 2014. Modeling and simulation of a gas absorption heat pump. Washington DC: *Proceedings of the International Sorption Heat Pump Conference*, University of Maryland.
- Suamir I., Tassou S., 2013. Performance evaluation of integrated trigeneration and CO₂ refrigeration systems. *Appl. Therm. Eng.*, 50, 1487-1495. DOI: 10.1016/j.applthermaleng.2011.11.055.
- Suamir I., Tassou S., Marriott D., 2012. Integration of CO₂ refrigeration and trigeneration systems for energy and GHG emission savings in supermarkets. *Int. J. Refrig.*, 35, 407-417. DOI: 10.1016/j.ijrefrig.2011.10.008.
- Syed A., Izquierdo M., Rodriguez P., Maidment G., Missenden J., Lecuona A., Tozer R., 2005. A novel experimental investigation of a solar cooling system in Madrid. *Int. J. Refrig.*, 28, 859-871. DOI: 10.1016/j.ijrefrig.2005.01.007.
- Ullah K., Saidur R., Ping H., Akikur R., Shuvo N., 2013. A review of solar thermal refrigeration and cooling methods. *Renewable Sustainable Energy Rev.*, 24, 499-513. DOI: 10.1016/j.rser.2013.03.024.
- Wang D., Xiaa Z., Wua J., Wang R., Zhai H., Dou W., 2005. Study of a novel silica gel-water adsorption chiller. Part I. Design and performance prediction. *Int. J. Refrig.*, 28, 1073-1083. DOI: 10.1016/j.ijrefrig.2005.03.001.
- Wang R.Z., Li M., Xu Y.X., Wu J., 2000. An energy efficient hybrid system of solar powered water heater and adsorption ice maker. *Solar Energy*, 68, 189-195. DOI: 10.1016/S0038-092X(99)00062-6.
- Ward D.S., Duff W.S., Ward J.C., Löff G.O.G., 1979. Integration of evacuated tubular solar collectors with lithium bromide absorption cooling systems. *Solar Energy*, 22, 335-341. DOI: 10.1016/0038-092X(79)90186-5.
- Yamaguchi H., Zhang X.-R., 2009. A novel CO₂ refrigeration system achieved by CO₂ solid-gas two-phase fluid and its basic study on system performance. *Int. J. Refrig.*, 32, 1683-1693. DOI: 10.1016/j.ijrefrig.2009.05.003.
- Zhang G., Wang D., Zhang J., Han Y., Wanchao S., 2011. Simulation of operating characteristics of the silica gel-water adsorption chiller powered by solar energy. *Solar Energy*, 85, 1469-1478. DOI: 10.1016/j.solener.2011.04.005.
- Zheng D., Meng X., 2012. Ultimate refrigerating conditions, behavior turning and a thermodynamic analysis for absorption-compression hybrid refrigeration cycle. *Energy Convers. Manage.*, 56, 166-174. DOI: 10.1016/j.enconman.2011.10.017.

Received 05 August 2014

Received in revised form 15 July 2015

Accepted 25 July 2015