

INVESTIGATIONS OF CARBON DIOXIDE ABSORPTION INTO AQUEOUS POTASSIUM CARBONATE SOLUTIONS CONTAINING PRIMARY AND SECONDARY ALKANOLAMINES

Grzegorz Bińczak^{*1}, Władysław Moniuk², Zofia Mordecka¹, Cezary Możeński¹

¹Institute of New Chemical Syntheses, Tysiąclecia Państwa Polskiego 13A, Puławy 24-110, Poland

²Warsaw University of Technology, Faculty of Chemical and Process Engineering, Waryńskiego 1, 00-645 Warsaw, Poland

Dedicated to Prof. Ryszard Pohorecki on the occasion of his 80th birthday

In the paper the results of measurements of CO₂ absorption rate in aqueous potassium carbonate solutions containing cyclohexylamine, diethanolamine, 2-methylaminoethanol and triethylenetetramine as activators have been presented. Enhancement mass transfer factors as well as reaction rate constants have been determined. Results show that among the tested activators triethylenetetramine and 2-methyl-aminoethanol may be used (instead of diethanolamine) as new promoters in a modified BENFLIED process.

Keywords: carbon dioxide absorption, alkanolamines, potassium carbonates, laminar jet

1. INTRODUCTION

The absorption of carbon dioxide from synthesis gases by water has been practiced for many years, but it is now being superseded by the use of more specific absorbents. Several solvents such as propylene carbonate, methanol, N-methyl-2-pyrrolidine have been investigated, but only diethylene glycol acetate have been employed on a commercial scale. The removal of carbon dioxide from gas mixtures by contacting gases with a liquid solution exemplifies a class of chemical reactions that is both of theoretical and practical importance. Chemically reactive solvents usually have higher capacity and higher mass transfer rates than those based solely on physical absorption.

Capital investments (mainly solvent cost and equipment cost) and energy requirements for solvent regeneration are the two most important factors to be considered in selecting an appropriate process.

The most widely used chemical solvents employed for removal of acid gases such as CO₂, H₂S and COS are:

- aqueous solution of alkanolamines such as MEA, DEA TEA, MDEA and DIPA (Vaidya and Kenig, 2010),
- potassium carbonate solution with addition of alkanolamines.

The use of a promoted potassium carbonate solution at a temperature of ca. 100°C has the advantage over an aqueous solution of alkanolamines in terms of its lower cost and better suitability for regeneration purposes, because it requires less steam for stripping than the cold solvent. A hot

^{*}Corresponding author, e-mail: Grzegorz.Binczak@ins.pulawy.pl

carbonate process with DEA as an activator was originally developed by Benson et al. in late 1950s (BENFIELD process).

Several research groups have investigated new alkanolamines activators for CO₂ absorption into potassium carbonate solutions (Bińczak et al., 2013; Cullinane and Rochelle, 2004; Kim et al., 2012; Pohorecki et al. 1988; Tseng et al., 1988; Yih and Sun, 1987).

The aim of this work was to evaluate the suitability of new alkanolamines activators (such as cyclohexylamine, 2-methylaminoethanol and triethylenetetramine) for synthesis gases purification in the modified BENFIELD process. The work is a part of a wider experimental program aimed at the development of a new activator in the process of CO₂ absorption during ammonia synthesis.

2. ABSORPTION MODEL

The following reactions occur during the CO₂ absorption into aqueous potassium carbonate solutions with alkanolamines used as activators



As can be seen, CO_{2(aq)} reacts in three parallel reactions with H₂O, OH⁻ ions and alkanolamines. The reaction with water is first-order, whereas reactions with OH⁻ ions and alkanolamines are second-order. For the pseudo-first order chemical reaction (see adequate criterion in Appendix) the reaction rate constant k_1 can be expressed as in Eq. (9):

$$k_1 = k_{\text{H}_2\text{O}} + k_{\text{OH}^-} [\text{OH}^-] + k_{\text{Am}} [\text{Am}] \quad (9)$$

The rate constant $k_{\text{H}_2\text{O}}$ for the reaction (2) does not depend on the ionic strength of the solution and may be calculated from Eq. (10) (Danckwerts and Sharma, 1966)

$$\log k_{\text{H}_2\text{O}} = 329.85 - 110.541 \log T - \frac{17265.4}{T} \quad (10)$$

From equilibrium constants of the reaction (5)

$$K_2 = \frac{[\text{H}^+][\text{CO}_3^{2-}]}{[\text{HCO}_3^-]} \quad (11)$$

and reaction (3)

$$K_w = [\text{OH}^-][\text{H}^+] \quad (12)$$

we get:

$$[\text{OH}^-] = \frac{K_w}{K_2} \frac{[\text{CO}_3^{2-}]}{[\text{HCO}_3^-]} = \frac{K_w}{K_2} \left(\frac{1-\alpha}{2\alpha} \right) \quad (13)$$

where the carbonisation ratio α is defined as in Eq. (14):

$$\alpha = \frac{[\text{HCO}_3^-]}{2[\text{CO}_3^{2-}] + [\text{HCO}_3^-]} \quad (14)$$

The product $k_{\text{OH}^-}[\text{OH}^-]$ can be expressed as in Eq. (15):

$$k_{\text{OH}^-}[\text{OH}^-] = k_{\text{OH}^-} \frac{K_w}{K_2} \frac{1-\alpha}{2\alpha} = K_R \frac{1-\alpha}{2\alpha} \quad (15)$$

where the kinetic coefficient K_R is expressed by the Eq. (16):

$$K_R = k_{\text{OH}^-} \frac{K_w}{K_2} \quad (16)$$

and can be calculated from the following relation (Pohorecki and Kucharski, 1991)

$$\ln K_R = 27.821 - \frac{8514}{T} + 0.5456I - 0.0276I^2 \quad (17)$$

3. EXPERIMENTS AND METHOD OF CALCULATIONS

The measurements of the CO_2 absorption rate were carried out at a normal pressure using a laminar jet absorber. The experimental apparatus is shown in Fig.1. A detailed description of the apparatus and the measuring technique can be found elsewhere (Pohorecki, 1972; Bińczak et al., 2013).

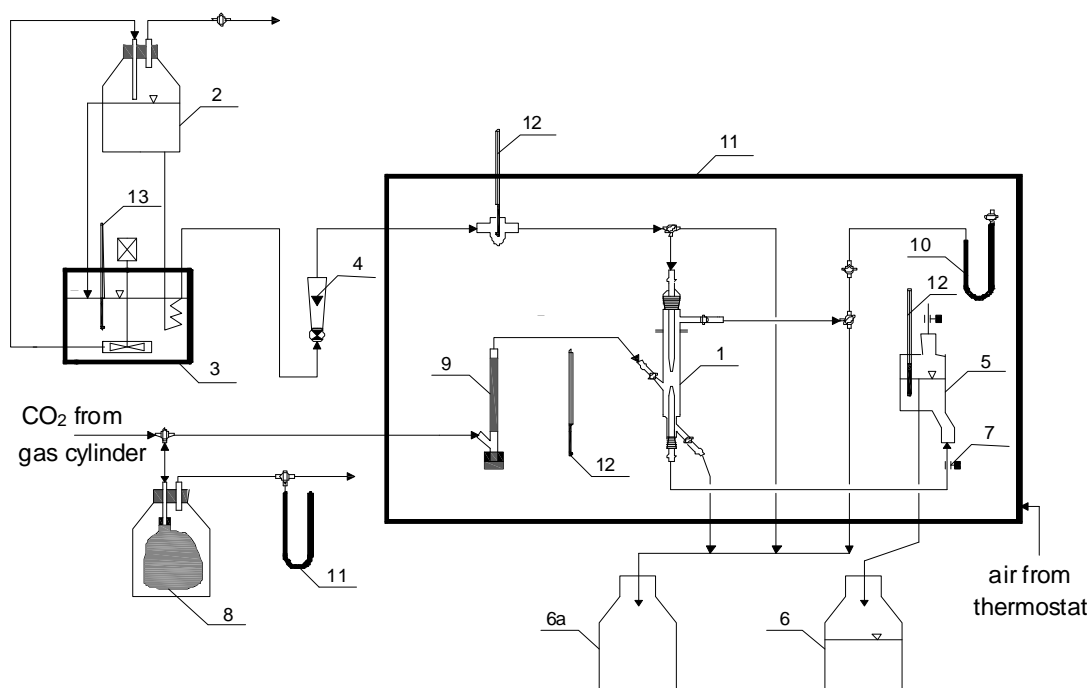


Fig. 1. Scheme of the experimental apparatus. 1- laminar jet absorber, 2- liquid tank, 3- thermostat, 4- rotameter, 5- overflow, 6- receiving tank, 7- clamp, 8- balloon with CO_2 , 9- soap-film meter, 10- manometer, 11- perspex chamber, 12, 13- thermometers

The measurements were carried out in the temperature range of 20–40°C at atmospheric pressure. Total concentration of carbonates (expressed as equivalent weight fraction of K_2CO_3) was 8 wt%, with carbonisation ratio of 0.4. The following activators were used: cyclohexylamine (CHA) 3 wt%; diethanolamine (DEA) 1–3 wt%; 2-methylaminoethanol (2-MAE) 1–3 wt% and triethylenetetramine (TETA) 1–3 wt%. CHA is a primary amine; DEA and 2-MAE are secondary amines; TETA has got two groups of primary amines ($-NH_2$) and two groups of secondary amines ($-NH-$).

In the absorption process with a reversible chemical reaction, the molar flux N_A of the absorbed component is expressed as:

$$N_A = k_L^*(C_{Ai} - C_{Ar}) \quad (18)$$

and the absorption rate R is:

$$R = N_A a = k_L^*(C_{Ai} - C_{Ar})a \quad (19)$$

For the laminar jet absorber the interfacial area a may be assumed according to Eq. (20):

$$a = \pi dl \quad (20)$$

The measured absorption rate R is:

$$R = \frac{V_g p_{CO_2}}{\bar{R} T} \quad (21)$$

The concentration of CO_2 at the interface can be calculated from the Henry's law:

$$C_{Ai} = H p_{Ai} \quad (22)$$

In the experiments, pure CO_2 (saturated only with water vapour) was used.

$$p_{Ai} = p_{A0} = P - p_{H_2O} \quad (23)$$

The Henry's constant for CO_2 -aqueous potassium carbonate solutions can be calculated from the following relations (Barrett, 1966; Danckwerts, 1970):

$$\log \frac{H}{H_w} = -\sum I_i h_i \quad (24)$$

$$h_i = h_+ + h_- + h_g \quad (25)$$

$$\log H_w = 9.1229 - 5.9044 \times 10^{-2} T + 7.8857 \times 10^{-5} T^2 \quad (26)$$

From equilibrium constants of the reactions (5), K_2 and (2), K_1

$$K_1 = \frac{[H^+][HCO_3^-]}{[CO_2]} \quad (27)$$

we have

$$[CO_2] = C_{Ar} = \frac{K_2 [HCO_3^-]^2}{K_1 [CO_3^{2-}]} \quad (28)$$

Making use of Eq. (14), we obtain:

$$C_{Ar} = \frac{4\alpha^2 K_2}{1-\alpha K_1} \left\{ [CO_3^{2-}] + \frac{1}{2} [HCO_3^-] \right\} \quad (29)$$

The equilibrium partial pressure of CO_2 is equal to:

$$p_{Ar} = \frac{C_{Ar}}{H} = \frac{4\alpha^2 K_2}{1-\alpha K_1 H} \left\{ [\text{CO}_3^{2-}] + \frac{1}{2} [\text{HCO}_3^-] \right\} = \frac{1}{K_p} \frac{4\alpha^2}{1-\alpha} \left\{ [\text{CO}_3^{2-}] + \frac{1}{2} [\text{HCO}_3^-] \right\} \quad (30)$$

where the equilibrium coefficient K_p is defined as:

$$K_p = \frac{K_1 H}{K_2} \quad (31)$$

and can be calculated from the following relation (Pohorecki and Kucharski, 1991)

$$\ln K_p = -3.154 + \frac{2311}{T} - 0.068I + 0.0138I^2 \quad (32)$$

Making use of the experimental values of the absorption rate R in Eq. (21), the values of the mass transfer coefficient with chemical reaction, k_L^* were calculated from Eq. (19).

For fast, pseudo-first order chemical reactions, the mass transfer coefficient with a chemical reaction is equal to (see relevant criteria in the Appendix):

$$k_L^* = \sqrt{D_A k_1} \quad (33)$$

The diffusivity of CO_2 in aqueous potassium carbonate solutions was calculated from the following relations (Barrett, 1966)

$$(D_A \mu)_T = (D_w \mu_w)_T \quad (34)$$

$$\log D_w = -8.1764 + \frac{712.5}{T} - \frac{2.591 \times 10^5}{T^2} \quad (35)$$

The viscosity of the solution was calculated using the relation proposed by Moniuk and Pohorecki (Moniuk and Pohorecki, 1991):

$$\log \mu = \frac{844.279}{T} - 2.8653 + 0.1458S + 0.0243\alpha \quad (36)$$

where:

$$\log \mu = \frac{844.279}{T} - 2.8653 + 0.1458S + 0.0243\alpha \quad (37)$$

The values of pseudo-first order reaction rate constant k_1 were calculated from Eq. (33) and values of second-order reaction rate k_{Am} were calculated from Eq. (9).

4. RESULTS AND DISCUSSION

The determined values of mass transfer with a chemical reaction, k_L^* were used for the calculation of the enhancement factor, E using the following relation:

$$E = \frac{k_L^*}{k_L} \quad (38)$$

For the laminar-jet absorber, the physical mass transfer coefficient in the liquid phase may be calculated from the relation below (Higbie model)

$$k_L = 2 \sqrt{\frac{D_A}{\pi \tau}} \quad (39)$$

where the contact time τ is given as:

$$\tau = \frac{1}{u} = \frac{\pi d^2 l}{4V_L} \quad (40)$$

In Fig. 2 the values of the enhancement factor, E , for the activators at 40°C are presented. As can be seen, the value of E for CHA as an activator is lower than that for DEA. However, the values of E for TETA and 2-MAE as activators are significantly higher than those for DEA.

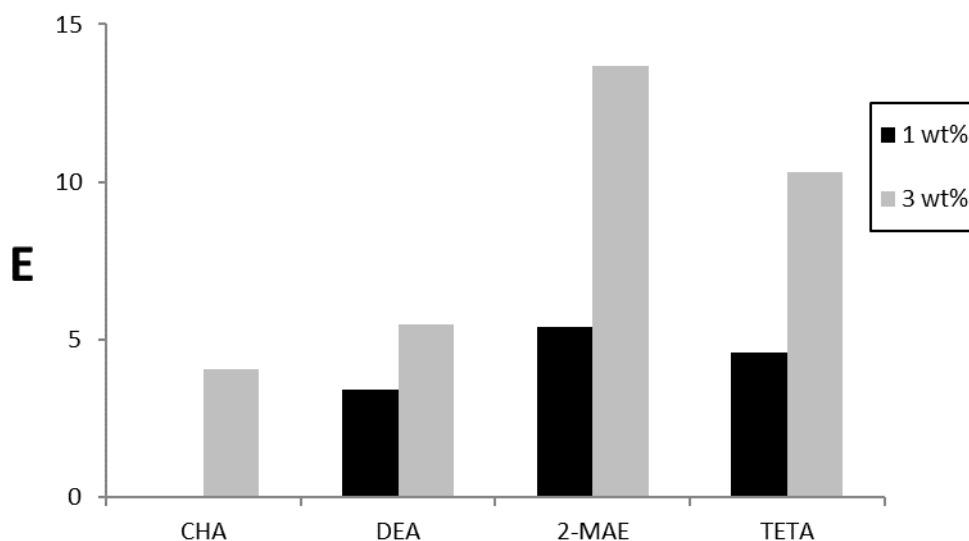


Fig. 2. The enhancement factor for the investigated activators

In Fig. 3 in Arrhenius plot ($\ln k_{Am} = f\left(\frac{1}{T}\right)$) for CO₂–CHA system is presented. The straight line can be described by the relation:

$$\ln k_{Am} = 20.439 - \frac{3681.6}{T} \quad (41)$$

Due to the low activation properties of CHA we present only results for its highest investigated concentration.

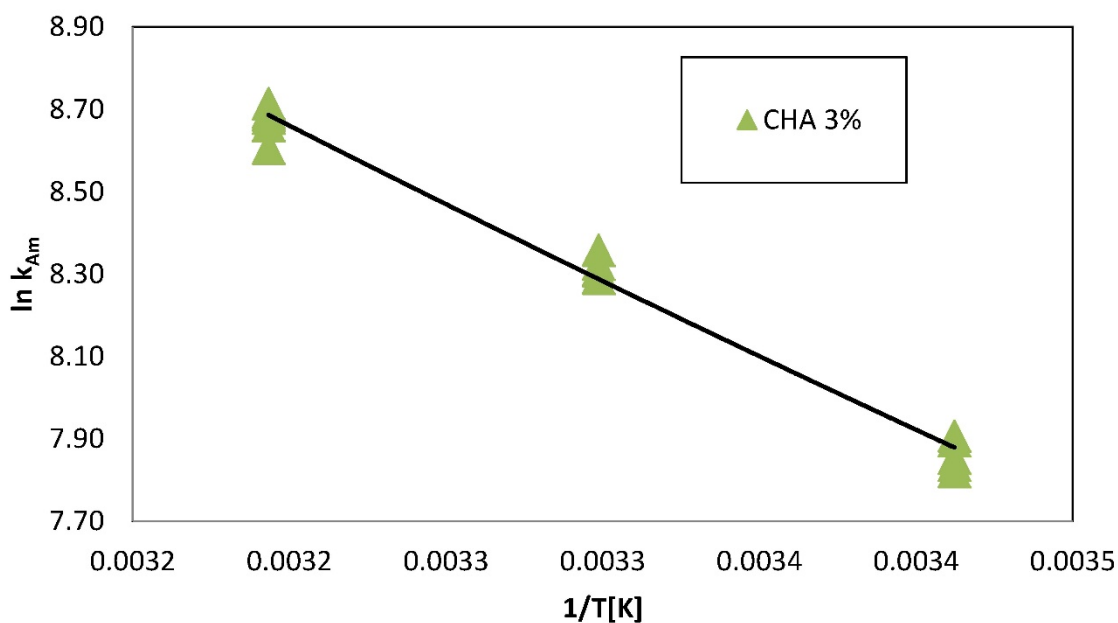


Fig. 3. Arrhenius plot ($\ln k_{Am} = f\left(\frac{1}{T}\right)$) for the CO₂–CHA system

In the literature there are no data on the kinetics of the reaction between CO₂ and CHA. It has been only mentioned (Cwalina and Kubicki, 1977) that CHA may be used as an activator in CO₂ absorption into aqueous potassium carbonate solutions.

In Fig. 4 Arrhenius plots $\left(\ln k_1 = f\left(\frac{1}{T}\right)\right)$ for the CO₂ – DEA system for different values of activator concentrations (1-3 wt%) are presented. The results reveal that the values of the pseudo-first order reaction rate constants, k_1 significantly depend on the activator concentrations.

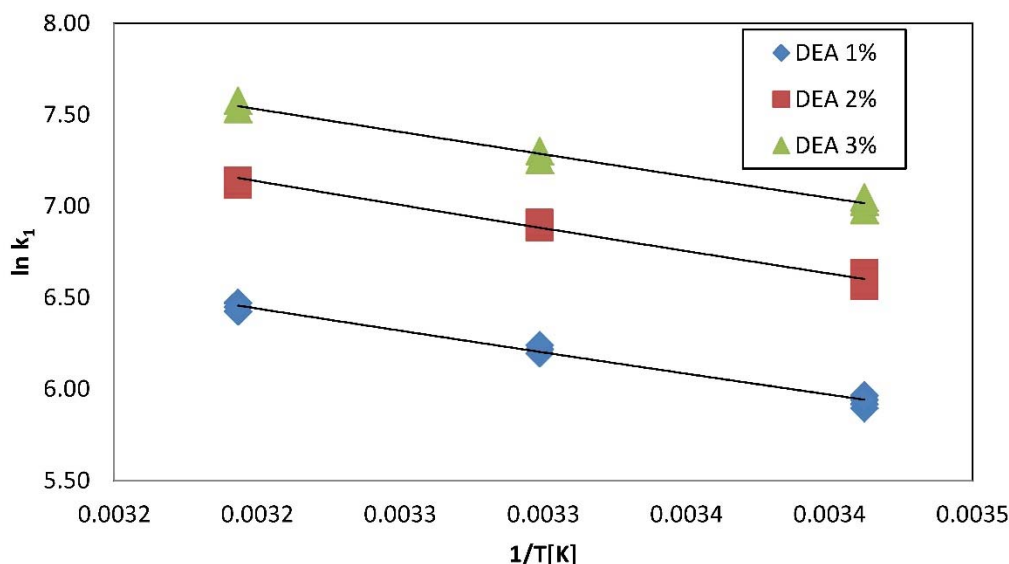


Fig. 4. Arrhenius plot $\left(\ln k_1 = f\left(\frac{1}{T}\right)\right)$ for the CO₂ – DEA system

In Fig. 5 an Arrhenius plot $\left(\ln k_{Am} = f\left(\frac{1}{T}\right)\right)$ for the CO₂ – DEA system is presented. The data show that the values of the reaction rate constant, k_{Am} practically do not depend on the activator concentrations. The straight line can be described by the following relation (42).

$$\ln k_{Am} = 7.1431 - \frac{1048.9}{T} \quad (42)$$

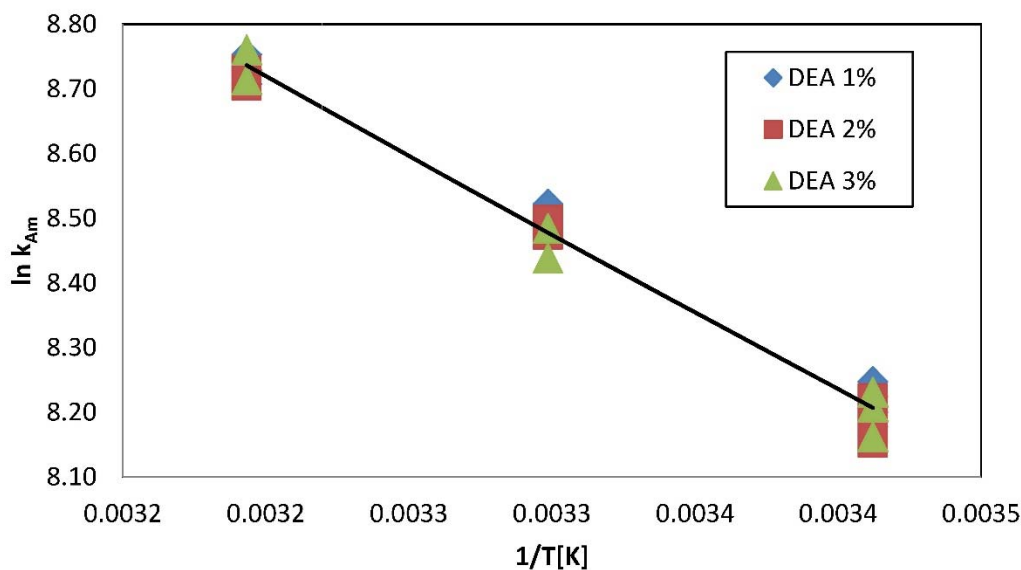


Fig. 5. Arrhenius plot $\left(\ln k_{Am} = f\left(\frac{1}{T}\right)\right)$ for the CO₂ – DEA system

Table 1. Literature data on the kinetics for the reaction between CO₂ and aqueous DEA

CO ₂ -DEA (aqueous solutions)			
Author	T, K	DEA, kmol/m ³	k _{DEA} , m ³ /(kmol·s)
Sharma, 1964	298	1	1240
Sada et al., 1976	298	0 – 1.922	1340
Donaldson and Nguyen, 1980	298	0 – 0.88	1400
Blanc and Demarais, 1981	298	0 – 4	655
Barth et al., 1983	298	0.021	110
Laddha and Danckwerts, 1981	298	0 – 2.88	1410
Blauwhoff et al., 1983	298	0 – 2.38	7300
Versteeg and Oyevaar, 1989	298	0 – 4.358	3240
Jensen et al., 1954	291	0 – 0.3	5900

DEA as an activator is commonly used in a number of industrial plants (BENFIELD process) and many studies have been performed on the kinetics of the reaction between CO₂ and DEA. As it becomes evident from Table 1, discrepancies between results obtained by various authors (at 298 K) are very large (110-7300 m³/(kmol·s)). At this temperature k_{Am} determined from the relation (42) amounts to 4200 m³/(kmol·s).

In Fig. 6 Arrhenius plots ($\ln k_1 = f\left(\frac{1}{T}\right)$) for the CO₂–2-MAE system for a different values of activator concentrations (1-3 wt%) are presented. The results reveal that the values of the pseudo-first order reaction rate constants, k₁ significantly depend on the activator concentrations.

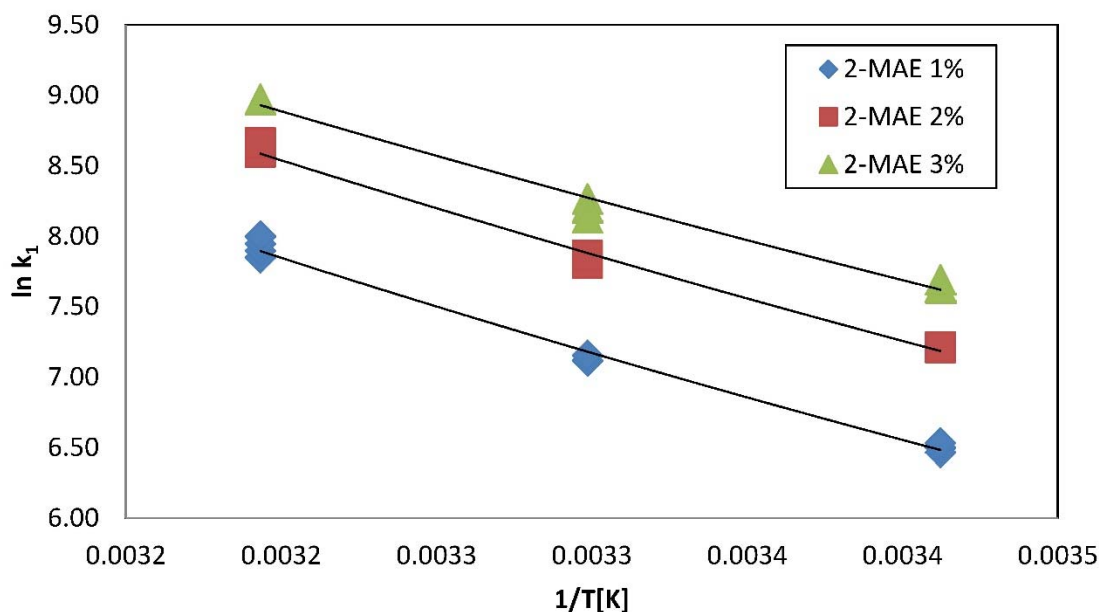


Fig. 6. Arrhenius plot ($\ln k_1 = f\left(\frac{1}{T}\right)$) for the CO₂–2-MAE system

In Fig. 7 an Arrhenius plot ($\ln k_{Am} = f\left(\frac{1}{T}\right)$) for the CO₂–2-MAE system is presented. The data show that the values of the reaction rate constant, k_{Am} practically are independent of the activator concentration. The straight line can be described by the following relation (43).

$$\ln k_{Am} = 29.925 - \frac{6295.6}{T} \quad (43)$$

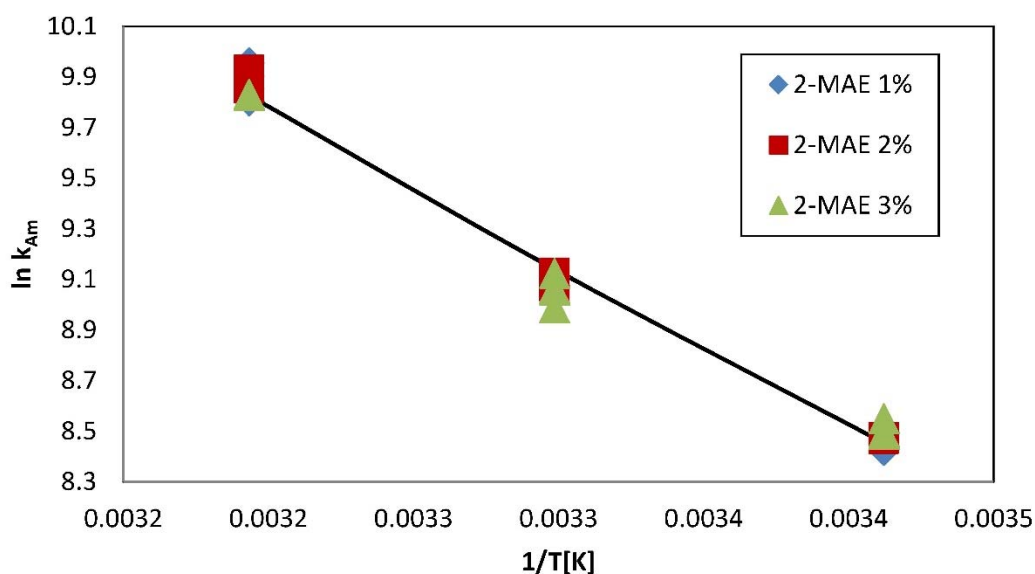


Fig. 7. Arrhenius plot ($\ln k_{Am} = f\left(\frac{1}{T}\right)$) for the CO_2 –2-MAE system

Mimura et al. (1988) investigated the kinetics of the reaction between CO_2 and 2-MAE in aqueous solutions of 2-MAE (0.9-2.5 kmol/m³). At 298 K, the value of the reaction rate constant, k_{Am} amounts to 7940 m³/(kmol·s). From Eq. (43) k_{Am} is 6604 m³/(kmol·s).

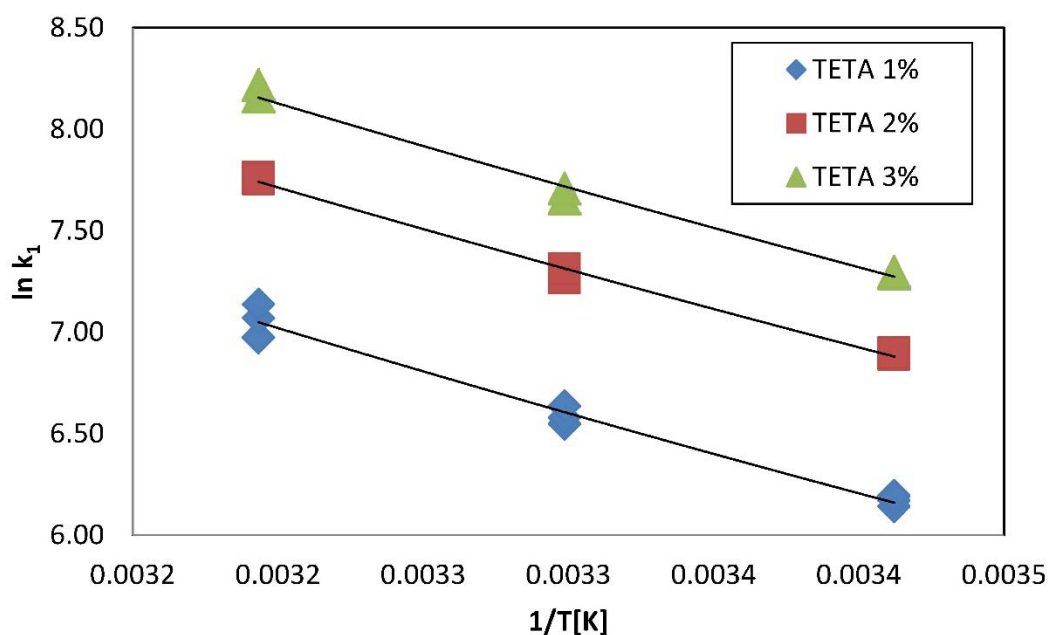


Fig. 8. Arrhenius plot ($\ln k_1 = f\left(\frac{1}{T}\right)$) for the CO_2 –TETA system

In Fig. 8 Arrhenius plots ($\ln k_1 = f\left(\frac{1}{T}\right)$) for the CO_2 –TETA system for different values of the activator concentrations (1-3 wt%) are presented. The results reveal that the values of the pseudo-first order reaction rate constants, k_1 significantly depend on the activator concentrations.

In Fig. 9 an Arrhenius plot $\left(\ln k_{Am} = f\left(\frac{1}{T}\right)\right)$ for the CO₂–TETA system is presented. As can be seen, the values of the reaction rate constant, k_{Am} are practically independent of the activator concentrations. The straight line can be described by the following relation (44):

$$\ln k_{Am} = 22.500 - \frac{4017.5}{T} \quad (44)$$

Singh et al. (2009) investigated relationships between the structure the number of amine groups) and the activity of amine-based CO₂ absorbents.

For the CO₂–TETA system the total capacity of aqueous solutions is high and amounts to 2.51 mol CO₂/mol amine or 17.15 mol CO₂/kg amine (Singh et al., 2009).

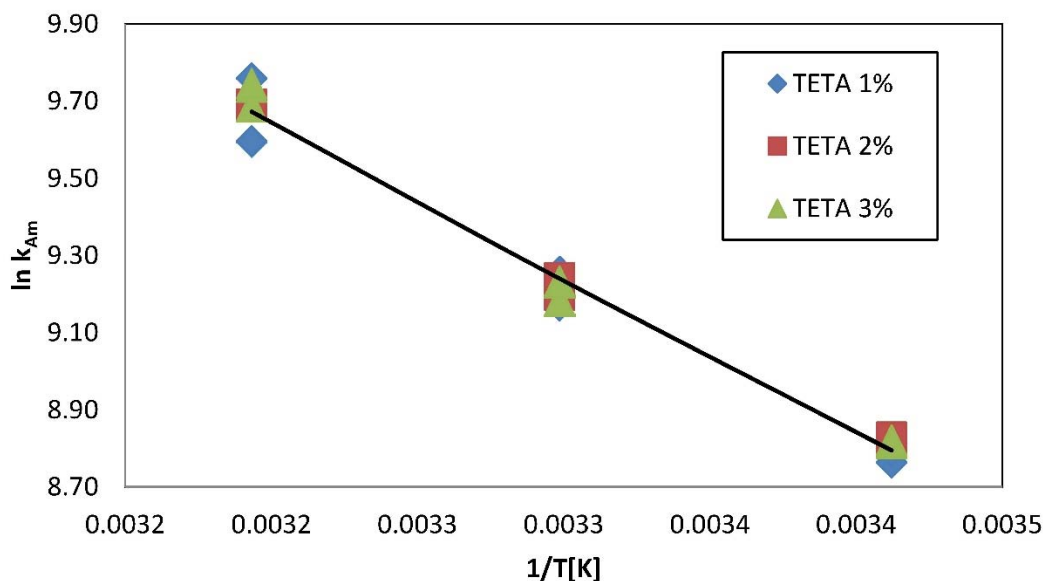


Fig. 9. Arrhenius plot $\left(\ln k_{Am} = f\left(\frac{1}{T}\right)\right)$ for the CO₂–TETA system

5. CONCLUSIONS

Measurements of a CO₂ absorption rate were carried out in aqueous potassium carbonate solutions containing alkanolamines (cyclohexylamine, diethanolamine, 2-ethyl-aminoethanol and triethylenetetramine) using the laminar-jet technique. Enhancement mass transfer factors as well as reaction rate constants between CO₂ and alkanolamines were determined. Results clearly show that triethylenetetramine and 2-methyl-aminoethanol may be used (instead of diethanolamine) as new activators of aqueous potassium carbonate/bicarbonate solution in a modified BENFLIED process.

SYMBOLS

a	interfacial area, m ²
a	concentration of carbonate ion Eq. (A2), kmol/m ³
b	concentration of bicarbonate ion Eq. (A2), kmol/m ³
C_A	molar concentration of component A, kmol/m ³
D_A	diffusivity of the absorbed gas in the liquid phase, m ² /s
d	nozzle diameter, m
E	enhancement factor

H	Henry's constant, kmol/(m ³ ·bar)
h_i, h_+, h_-, h_g	contributions of compound, cation, anion and gas respectively, m ³ /kmol
I	ionic strength of solution, kmol/m ³
K_2	equilibrium constant reaction (5), kmol/m ³
K_p	equilibrium coefficient, kmol/(m ³ ·atm)
K_R	kinetic coefficient defined by Eq. (16), 1/s
K_w	ionic product of water, kmol ² /m ⁶
k_l	pseudo-first order reaction rate constant, 1/s
k_{Am}	reaction rate constant, m ³ /(kmol·s)
k_{H_2O}	reaction rate constant, m ³ /(kmol·s)
k_L	liquid-film mass transfer coefficient, m/s
k_L^*	liquid-film mass transfer coefficient with chemical reaction, m/s
k_{OH^-}	reaction rate constant, m ³ /(kmol·s)
l	jet length, m
N_A	molar flux, kmol/m ² ·s
P	total pressure, bar
p	partial pressure, bar
R	rate of absorption, kmol/s
\bar{R}	gas constant, J/(mol·K)
S	total concentration of carbonates defined by Eq. (37), kmol/m ³
T	temperature, K
u	linear liquid velocity, m/s
V	volumetric flow rate, m ³ /s

Greek symbols

α	carbonisation ratio defined by Eq. (14)
μ	viscosity, mPa·s
τ	contact time, s

Subscripts

A	absorbed gas
g	gas
i	interface
L	liquid
r	chemical equilibrium
w	water

REFERENCES

- Barrett P.V.L., 1966. *Gas absorption on sieve plate*. Ph. D. Thesis, University of Cambridge, Cambridge, 4-53.
- Barth D., Tondre C., Delpuech J.-J., 1983. Stopped-flow determination of carbon dioxide diethanolamine reaction mechanism. Kinetics of carbamate formation. *Int. J. Chem. Kin.*, 15, 1147-1160. DOI: 10.1002/kin.550151104.
- Benson H.E., Field J.H., Haynes W.P., 1956. Improved process for CO₂ absorption used hot carbonate solutions. *Chem. Eng. Prog.*, 52, 433-438.
- Benson H.E., Field J.H., 1959. *US Patent 2886405*.
- Bińczak, G., Pohorecki R., Moniuk W., Możeński C., Cwalina J., Mordecka Z., 2013. Study of carbon dioxide absorption in aqueous solutions of potassium carbonate activated with alkanolamines. *Przem. Chem.*, 92, 321-324 (in Polish).
- Blanc C., Demarais G., 1981. Vitesses de la réaction du CO₂ avec la diéthanolamine. *Entropie*, 102, 53-61.
- Blauwhoff P.M.M., Versteeg G.F., van Swaaij W.P.M., 1983. A study on the reaction between CO₂ and alkanolamines in aqueous solutions. *Chem. Eng. Sci.*, 38, 1411-1429. DOI: 10.1016/0009-2509(83)80077-3.

- Cullinane J.T., Rochelle G.T., 2004. Carbon dioxide absorption with aqueous potassium carbonate promoted by piperazine. *Chem. Eng. Sci.*, 59, 3619-3630. DOI: 10.1016/j.ces.2004.03.029.
- Cwalina J., Kubicki J., 1977. Effect of selected activators on carbon dioxide absorption in potassium carbonates solution. *Chemia Stosowana (Applied Chemistry)*, 11, 47-57 (in Polish).
- Danckwerts P.V., Sharma M.M., 1966. *The absorption of carbon dioxide into solutions of alkalis and amines (with some notes on hydrogen sulphide and carbonyl sulphide)*. I. Chem. E. Review Series, No 2, The chemical Engineer, CE 244-278.
- Danckwerts P.V., 1970. *Gas-liquid reactions*. McGraw-Hill Book Company, New York, 17-21.
- Donaldson T.L., Nguyen Y.N., 1980. Carbon dioxide reaction kinetics and transport in aqueous amine membranes. *Ind. Eng. Chem. Fundam.*, 19, 260-266. DOI: 10.1021/i160075a005.
- Jensen M.B., Jorgensen B., Faurholt C., 1954. Reactions between carbon dioxide and aminoalcohols. I. Monoethanolamine and diethanolamine. *Acta Chem. Scand.*, 8, 1137-1140. DOI: 10.3891/acta.chem.scand.08-1137.
- Kim Y.E., Choi J.H., Nam, S.C., Yoon Y.L., 2012. CO₂ absorption capacity using aqueous potassium carbonate with 2-methylpiperidine and piperazine. *J. Ind. Eng. Chem.*, 18, 105-110. DOI: 10.1016/j.jiec.2011.11.078.
- Laddha S.S., Danckwerts P.V., 1981. Reaction of CO₂ with ethanolamines: Kinetics from gas absorption. *Chem. Eng. Sci.*, 36, 479-482. DOI: 10.1016/0009-2509(81)80135-2.
- Leder F., 1971. The absorption of CO₂ into chemically reactive solutions at high temperatures. *Chem. Eng. Sci.*, 26, 1381-1390. DOI: 10.1016/0009-2509(71)80058-1.
- Mimura T., Suda T., Iwacki I., Honda A., Kumazawa H., 1998. Kinetics of reaction between carbon dioxide and sterically hindered amines for carbon dioxide recovery from power plant flue gases. *Chem. Eng. Comm.*, 170, 245-260. DOI: 10.1080/00986449808912745.
- Moniuk W., Pohorecki R., 1991. Viscosity and density of sodium and potassium alkaline solutions. *Hung. J. Ind. Chem.*, 19, 175-178.
- Pohorecki R., Wroński S., 1977. *Kinetics and thermodynamics of chemical engineering processes*. WNT, Warsaw, 482-486 (in Polish).
- Pohorecki R., 1972. Measurements of reaction rate constant for absorption of CO₂ into K₂CO₃/KHCO₃ solutions containing KCl and NaOCl. *Inż. Chem.* 2, 383-402 (in Polish).
- Pohorecki R., Xoan D.T., Moniuk W., 1988. Study of carbon dioxide absorption in aqueous solution of potassium carbonate containing ethylaminoethanols. II. Kinetic relations for 2-ethylaminoethanol. *Inż. Chem. Proc.*, 9, 667-680 (in Polish).
- Pohorecki R., Kucharski E., 1991. Desorption with chemical reaction in the system CO₂-aqueous solution of potassium carbonate. *Chem. Eng. J.*, 46, 1-7.
- Sada E., Kumazawa H., Butt M.A., 1976. Gas absorption with consecutive chemical reaction: Absorption of carbon dioxide into aqueous amine solutions. *Can. J. Chem. Eng.*, 31, 421-424. DOI: 10.1002/cjce.5450540507.
- Sharma M.M., 1964. *Kinetics of gas absorption*. Ph. D. Thesis, University of Cambridge, Cambridge.
- Singh P., Niederer J.P.M., Versteeg G.F., 2009. Structure and activity relationships for amine-based CO₂ absorbents - II. *Chem. Eng. Res. Des.*, 87, 135-144. DOI: 10.1016/j.cherd.2008.07.014.
- Tseng P.C., Ho W.S., Savage D.W., 1988. Carbon dioxide absorption into promoted carbonate solutions. *AIChE J.*, 34, 922-931. DOI: 10.1002/aic.690340604.
- Vaidya P.D., Kenig E.Y., 2010. Termolecular kinetic model for CO₂-alkanolamine reactions: An overview. *Chem. Eng. Technol.*, 33, 1577-1581. DOI: 10.1002/ceat.201000050.
- Versteeg G.F., Oyevaar M.H., 1989. The reaction between CO₂ and diethanolamine at 298 K. *Chem. Eng. Sci.*, 44, 1264-1268. DOI: 10.1016/0009-2509(89)87026-5.
- Yih S.-M., Sun C.-C., 1987. Simultaneous absorption of hydrogen sulphide and carbon dioxide into potassium carbonate solution with or without amine promoters. *Chem. Eng. J.*, 34, 65-72.

Received 15 June 2015

Received in revised form 18 January 2016

Accepted 19 January 2016

APPENDIX

- 1. Criterion for pseudo-first order reaction (Leder, 1971)

$$1 + \frac{[RR'NH]}{C_{Ai}} \gg \sqrt{1 + \frac{D_A k_{OH^-} [OH^-] + D_A k_{Am} [Am]}{k_L^2}} \quad (A1)$$

$$1 + \frac{1}{C_{Ai} \left(\frac{1}{a} + \frac{2}{b} \right)} \gg \sqrt{1 + \frac{D_A k_{OH^-} [OH^-] + D_A k_{Am} [Am]}{k_L^2}} \quad (A2)$$

Both these criteria (A1) and (A2) must be met.

- 2. Criterion for fast reaction (Pohorecki and Wroński, 1977)

$$\frac{\sqrt{D_A k_1}}{k_L} \gg 1 \quad (A3)$$